

NYISO CEO/COO Report

Stephen Whitley

President & Chief Executive Officer

Rick Gonzales

*Senior Vice President & Chief Operating Officer
New York Independent System Operator*

Management Committee Meeting

March 27, 2013

Rensselaer, NY

NYISO CEO/COO Report

CEO Report

- ◆ **Infrastructure Master Plan**

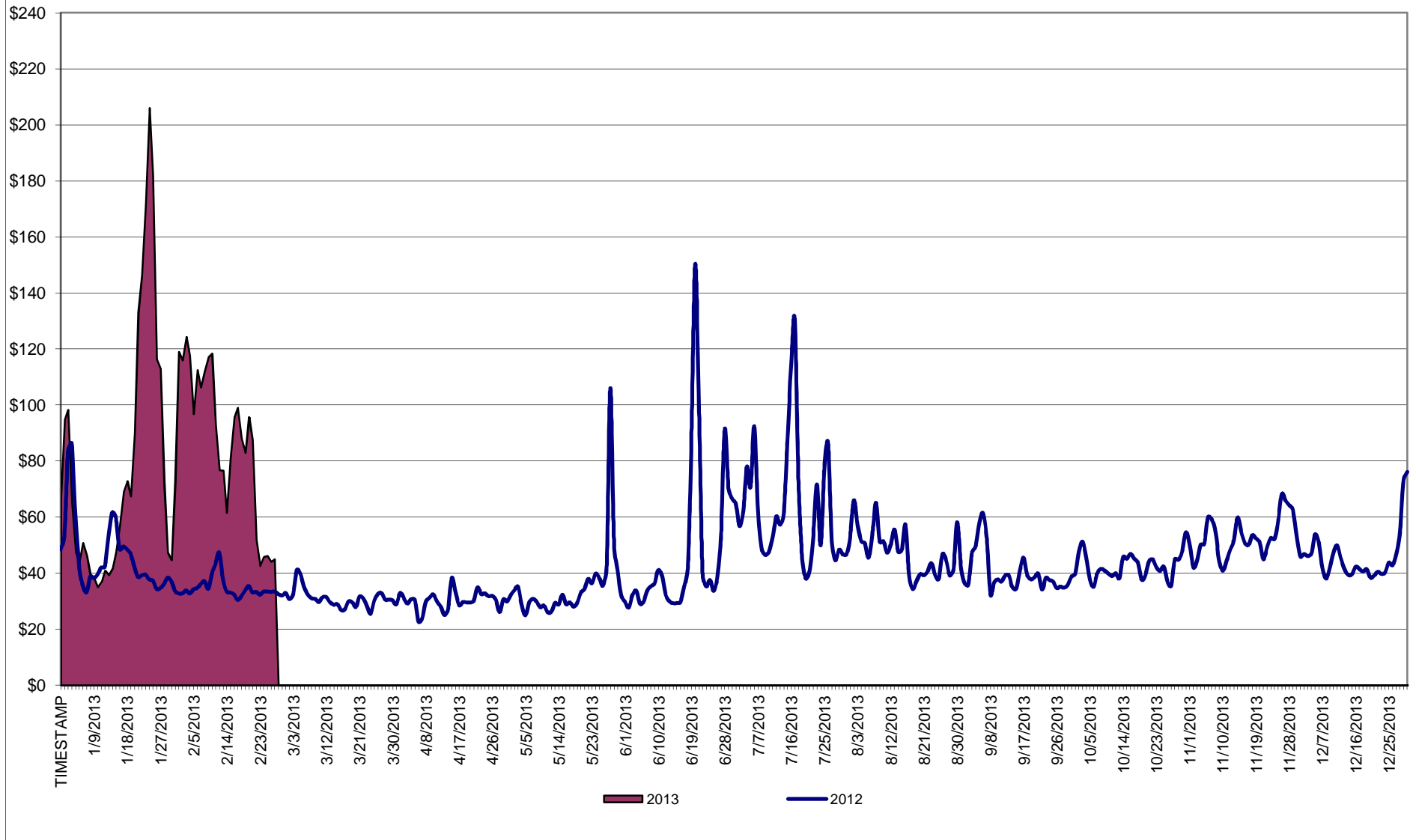
COO Report

- ◆ **Market Performance Highlights – For Information Only**
- ◆ **Operations Performance Metrics Monthly Report**

Market Performance Highlights for February 2013

- **LBMP for February is \$85.69/MWh, higher than \$79.73/MWh in January, and significantly higher than \$32.45/MWh in February 2012.**
 - Day Ahead Load Weighted LBMPs are higher compared to January.
 - Real Time Load Weighted LBMPs are lower compared to January.
- **February 2013 average monthly cost of \$84.93/MWh is a marked increase from \$41.12/MWh in February 2012.**
- **Average daily sendout is 453GWh/day in February; flat month-over-month, and higher than 431 GWh/day in February 2012.**
- **Natural gas and distillate prices were slightly higher compared to the previous month.**
 - Natural Gas (Transco Z6 NY) was \$10.39/MMBtu, up from \$9.98/MMBtu in January.
 - Jet Kerosene Gulf Coast was \$23.91/MMBtu, up from \$22.82/MMBtu in January.
 - Ultra Low Sulfur No.2 Diesel NY Harbor was \$23.19/MMBtu, up from \$22.14/MMBtu in January.
- **Uplift per MWh is lower compared to the previous month.**
 - Uplift (not including NYISO cost of operations) is (\$0.24)/MWh, lower than \$0.08/MWh in January.
 - The Local Reliability Share is \$0.40/MWh, comparable to \$0.41 in January.
 - The Statewide Share is (\$0.64)/MWh, lower than (\$0.33)/MWh in January.
 - TSA \$ per NYC MWh is \$0.00/MWh.
 - Total uplift costs (Schedule 1 components including NYISO Cost of Operations) are lower than January.

Daily NYISO Average Cost/MWh (Energy & Ancillary Services)*
 2012 Annual Average \$45.23/MWh
 February 2012YTD Average \$41.12/MWh
 February 2013YTD Average \$84.93/MWh



* Excludes ICAP payments.

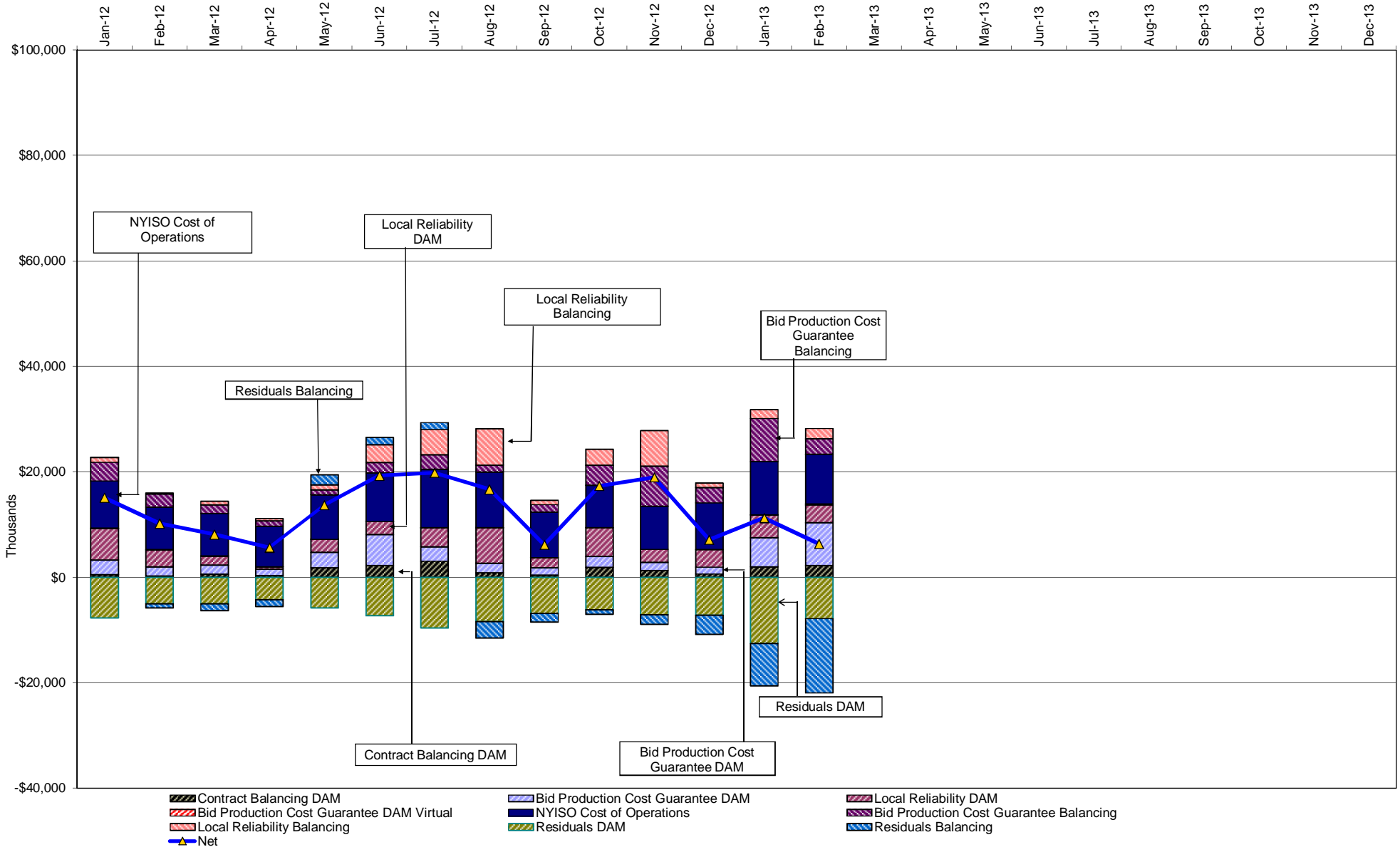
NYISO Average Cost/MWh (Energy and Ancillary Services) *
from the LBMP Customer point of view

2013	<u>January</u>	<u>February</u>	<u>March</u>	<u>April</u>	<u>May</u>	<u>June</u>	<u>July</u>	<u>August</u>	<u>September</u>	<u>October</u>	<u>November</u>	<u>December</u>
LBMP	79.73	85.69										
NTAC	0.79	0.83										
Reserve	0.38	0.44										
Regulation	0.13	0.13										
NYISO Cost of Operations	0.69	0.69										
Uplift	0.08	(0.24)										
Uplift: Local Reliability Share	0.41	0.40										
Uplift: Statewide Share	(0.33)	(0.64)										
Voltage Support and Black Start	0.36	0.36										
Avg Monthly Cost	82.18	87.91										
Avg YTD Cost	82.18	84.93										
TSA \$ per NYC MWh	0.00	0.00										
2012	<u>January</u>	<u>February</u>	<u>March</u>	<u>April</u>	<u>May</u>	<u>June</u>	<u>July</u>	<u>August</u>	<u>September</u>	<u>October</u>	<u>November</u>	<u>December</u>
LBMP	44.00	32.45	28.98	28.31	34.68	47.37	63.80	46.24	39.59	39.28	50.15	44.68
NTAC	0.85	0.80	0.68	0.71	0.72	0.77	0.58	0.65	0.47	0.70	0.75	0.83
Reserve	0.35	0.25	0.38	0.32	0.13	0.36	0.36	0.22	0.23	0.29	0.40	0.25
Regulation	0.10	0.08	0.13	0.12	0.09	0.15	0.15	0.12	0.09	0.10	0.11	0.09
NYISO Cost of Operations	0.64	0.64	0.64	0.64	0.64	0.64	0.64	0.64	0.64	0.64	0.64	0.64
Uplift	0.44	0.17	0.00	(0.18)	(0.11)	0.61	0.23	0.22	(0.40)	0.71	0.79	(0.13)
Uplift: Local Reliability Share	0.49	0.27	0.19	0.07	0.25	0.42	0.49	0.83	0.20	0.66	0.69	0.29
Uplift: Statewide Share	(0.05)	(0.10)	(0.19)	(0.25)	(0.36)	0.19	(0.26)	(0.61)	(0.59)	0.05	0.10	(0.43)
Voltage Support and Black Start	0.37	0.37	0.37	0.37	0.37	0.37	0.37	0.37	0.37	0.37	0.37	0.37
Avg Monthly Cost	46.75	34.75	31.19	30.29	36.52	50.27	66.14	48.46	41.00	42.10	53.21	46.74
Avg YTD Cost	46.75	41.12	37.96	36.09	36.18	38.89	44.26	44.91	44.50	44.29	45.10	45.23
TSA \$ per NYC MWh	0.00	0.00	0.00	0.00	1.52	0.45	0.85	0.46	0.59	0.00	0.00	0.00
2011	<u>January</u>	<u>February</u>	<u>March</u>	<u>April</u>	<u>May</u>	<u>June</u>	<u>July</u>	<u>August</u>	<u>September</u>	<u>October</u>	<u>November</u>	<u>December</u>
LBMP	74.91	55.60	46.98	46.44	48.49	60.33	75.76	56.04	46.86	42.49	38.97	39.73
NTAC	0.62	0.75	0.86	0.81	1.13	1.22	0.66	0.60	0.43	0.56	0.62	0.69
Reserve	0.44	0.50	0.41	0.43	0.48	0.28	0.28	0.13	0.25	0.41	0.26	0.28
Regulation	0.20	0.18	0.15	0.12	0.10	0.15	0.12	0.09	0.08	0.09	0.08	0.09
NYISO Cost of Operations	0.70	0.70	0.70	0.70	0.70	0.70	0.70	0.70	0.70	0.70	0.70	0.70
Uplift	1.26	0.58	0.45	0.21	(0.02)	0.61	1.42	0.65	0.15	(0.21)	0.11	0.15
Uplift: Local Reliability Share	0.95	0.71	0.33	0.38	0.36	0.82	1.19	0.87	0.45	0.23	0.19	0.19
Uplift: Statewide Share	0.31	(0.12)	0.12	(0.18)	(0.38)	(0.21)	0.24	(0.21)	(0.30)	(0.44)	(0.08)	(0.05)
Voltage Support and Black Start	0.37	0.37	0.37	0.37	0.37	0.37	0.37	0.37	0.37	0.37	0.37	0.37
Avg Monthly Cost	78.50	58.69	49.92	49.07	51.24	63.67	79.30	58.58	48.83	44.40	41.11	42.00
Avg YTD Cost	78.50	68.82	62.36	59.14	57.52	58.70	62.77	62.13	60.66	59.18	57.76	56.47
TSA \$ per NYC MWh	0.00	0.00	0.00	0.13	0.00	1.45	0.38	1.59	0.15	0.00	0.00	0.00

* Excludes ICAP payments.
Market Mitigation and Analysis
Prepared: 3/7/2013 2:20 PM

Data reflects true-ups thru December 2012.

NYISO Dollar Flows - Uplift- OATT Schedule 1 components - Data through February 28, 2013



NYISO Markets Transactions

2013	<u>January</u>	<u>February</u>	<u>March</u>	<u>April</u>	<u>May</u>	<u>June</u>	<u>July</u>	<u>August</u>	<u>September</u>	<u>October</u>	<u>November</u>	<u>December</u>
Day Ahead Market MWh	15,140,096	14,116,189										
DAM LSE Internal LBMP Energy Sales	56%	55%										
DAM External TC LBMP Energy Sales	4%	6%										
DAM Bilateral - Internal Bilaterals	38%	37%										
DAM Bilateral - Import/Non-LBMP Market Bilaterals	0%	0%										
DAM Bilateral - Export/Non-LBMP Market Bilaterals	1%	1%										
DAM Bilateral - Wheel Through Bilaterals	1%	1%										
Balancing Energy Market MWh	-462,089	-641,428										
Balancing Energy LSE Internal LBMP Energy Sales	-131%	-117%										
Balancing Energy External TC LBMP Energy Sales	33%	21%										
Balancing Energy Bilateral - Internal Bilaterals	4%	10%										
Balancing Energy Bilateral - Import/Non-LBMP Market Bilaterals	0%	0%										
Balancing Energy Bilateral - Export/Non-LBMP Market Bilaterals	5%	3%										
Balancing Energy Bilateral - Wheel Through Bilaterals	-12%	-16%										
Transactions Summary												
LBMP	59%	59%										
Internal Bilaterals	39%	39%										
Import Bilaterals	0%	0%										
Export Bilaterals	1%	1%										
Wheels Through	1%	0%										
Market Share of Total Load												
Day Ahead Market	103.1%	104.8%										
Balancing Energy +	-3.1%	-4.8%										
Total MWh	14,678,007	13,474,761										
Average Daily Energy Sendout/Month GWh	453	453										

2012	<u>January</u>	<u>February</u>	<u>March</u>	<u>April</u>	<u>May</u>	<u>June</u>	<u>July</u>	<u>August</u>	<u>September</u>	<u>October</u>	<u>November</u>	<u>December</u>
Day Ahead Market MWh	14,877,279	13,473,786	13,590,456	12,482,692	13,324,441	14,898,725	17,946,019	17,185,445	14,262,425	13,354,729	12,839,137	14,719,983
DAM LSE Internal LBMP Energy Sales	58%	57%	58%	59%	61%	63%	65%	63%	61%	60%	62%	57%
DAM External TC LBMP Energy Sales	1%	1%	0%	1%	1%	1%	1%	1%	0%	1%	3%	3%
DAM Bilateral - Internal Bilaterals	38%	40%	40%	38%	36%	35%	32%	34%	37%	38%	33%	37%
DAM Bilateral - Import/Non-LBMP Market Bilaterals	0%	0%	0%	0%	0%	0%	0%	0%	0%	0%	0%	0%
DAM Bilateral - Export/Non-LBMP Market Bilaterals	1%	2%	2%	2%	1%	1%	1%	1%	1%	1%	1%	1%
DAM Bilateral - Wheel Through Bilaterals	1%	0%	1%	1%	1%	1%	1%	1%	0%	0%	1%	1%
Balancing Energy Market MWh	-878,126	-816,828	-896,684	-371,022	-31,455	-534,794	-575,091	-528,572	-692,656	-759,328	15,462	-738,593
Balancing Energy LSE Internal LBMP Energy Sales	-110%	-111%	-110%	-126%	-561%	-129%	-126%	-138%	-121%	-125%	-1207%	-108%
Balancing Energy External TC LBMP Energy Sales	9%	7%	7%	20%	347%	22%	19%	30%	13%	19%	1212%	7%
Balancing Energy Bilateral - Internal Bilaterals	1%	1%	1%	4%	107%	8%	6%	4%	4%	3%	6%	0%
Balancing Energy Bilateral - Import/Non-LBMP Market Bilaterals	0%	0%	0%	0%	0%	0%	0%	0%	0%	0%	0%	0%
Balancing Energy Bilateral - Export/Non-LBMP Market Bilaterals	4%	3%	3%	7%	54%	3%	2%	2%	3%	3%	116%	3%
Balancing Energy Bilateral - Wheel Through Bilaterals	-3%	0%	-1%	-4%	-46%	-5%	0%	2%	1%	0%	-28%	-2%
Transactions Summary												
LBMP	57%	56%	55%	59%	61%	62%	65%	63%	59%	58%	65%	58%
Internal Bilaterals	41%	42%	43%	39%	36%	36%	33%	35%	39%	40%	33%	39%
Import Bilaterals	0%	0%	0%	0%	0%	0%	0%	0%	0%	0%	0%	0%
Export Bilaterals	2%	2%	2%	2%	2%	1%	1%	1%	1%	2%	2%	2%
Wheels Through	1%	0%	1%	1%	1%	1%	1%	1%	1%	0%	1%	1%
Market Share of Total Load												
Day Ahead Market	106.3%	106.5%	107.1%	103.1%	100.2%	103.7%	103.3%	103.2%	105.1%	106.0%	99.9%	105.3%
Balancing Energy +	-6.3%	-6.5%	-7.1%	-3.1%	-0.2%	-3.7%	-3.3%	-3.2%	-5.1%	-6.0%	0.1%	-5.3%
Total MWh	13,999,153	12,656,958	12,693,772	12,111,670	13,292,986	14,363,931	17,370,928	16,656,873	13,569,769	12,595,401	12,854,599	13,981,390
Average Daily Energy Sendout/Month GWh	443	431	407	396	420	471	551	529	447	398	410	434

+ Balancing Energy: Load(MW) purchased at Real Time LBMP.

* The signs for the detail section intuitively reflect the direction of power flow eliminating the use of double negatives when Balancing Energy is negative.

Notes: Percent totals may not equal 100% due to rounding.
Virtual Transactions are not reflected in this chart.

NYISO Markets 2013 Energy Statistics

	<u>January</u>	<u>February</u>	<u>March</u>	<u>April</u>	<u>May</u>	<u>June</u>	<u>July</u>	<u>August</u>	<u>September</u>	<u>October</u>	<u>November</u>	<u>December</u>
<u>DAY AHEAD LBMP</u>												
Price *	\$69.17	\$75.82										
Standard Deviation	\$47.21	\$29.98										
Load Weighted Price **	\$72.17	\$77.95										
<u>RTC LBMP</u>												
Price *	\$73.69	\$64.15										
Standard Deviation	\$88.27	\$36.96										
Load Weighted Price **	\$77.52	\$66.07										
<u>REAL TIME LBMP</u>												
Price *	\$76.47	\$64.87										
Standard Deviation	\$83.80	\$38.96										
Load Weighted Price **	\$81.71	\$66.83										
Average Daily Energy Sendout/Month GWh	453	453										

NYISO Markets 2012 Energy Statistics

	<u>January</u>	<u>February</u>	<u>March</u>	<u>April</u>	<u>May</u>	<u>June</u>	<u>July</u>	<u>August</u>	<u>September</u>	<u>October</u>	<u>November</u>	<u>December</u>
<u>DAY AHEAD LBMP</u>												
Price *	\$40.91	\$31.15	\$27.44	\$26.88	\$29.79	\$38.71	\$53.95	\$41.17	\$35.74	\$37.10	\$47.31	\$41.47
Standard Deviation	\$15.62	\$6.23	\$7.00	\$7.04	\$10.22	\$31.58	\$32.19	\$15.94	\$11.26	\$8.21	\$11.52	\$10.18
Load Weighted Price **	\$42.20	\$31.73	\$28.25	\$27.72	\$31.33	\$43.17	\$58.33	\$43.57	\$37.44	\$38.19	\$48.58	\$42.38
<u>RTC LBMP</u>												
Price *	\$37.93	\$30.31	\$28.15	\$27.19	\$34.27	\$34.58	\$51.05	\$41.79	\$34.76	\$34.11	\$46.72	\$39.13
Standard Deviation	\$23.43	\$7.26	\$22.87	\$15.67	\$46.03	\$57.26	\$60.86	\$22.90	\$23.14	\$19.02	\$33.25	\$22.23
Load Weighted Price **	\$39.19	\$30.75	\$28.93	\$27.97	\$37.49	\$38.48	\$55.17	\$44.03	\$36.77	\$35.33	\$48.69	\$40.37
<u>REAL TIME LBMP</u>												
Price *	\$37.35	\$30.54	\$28.47	\$27.00	\$35.22	\$34.29	\$50.68	\$41.95	\$36.05	\$36.24	\$47.35	\$39.17
Standard Deviation	\$23.75	\$9.77	\$20.94	\$15.14	\$56.38	\$55.53	\$51.60	\$23.86	\$26.89	\$14.43	\$27.30	\$14.67
Load Weighted Price **	\$38.88	\$31.14	\$29.44	\$27.89	\$40.06	\$39.34	\$55.54	\$44.81	\$38.59	\$37.43	\$48.98	\$40.19
Average Daily Energy Sendout/Month GWh	443	431	407	396	420	471	551	529	447	398	410	434

* Average zonal load weighted prices.

** Average zonal load weighted prices, load weighted in each hour.

NYISO Monthly Average Internal LBMPs 2012- 2013

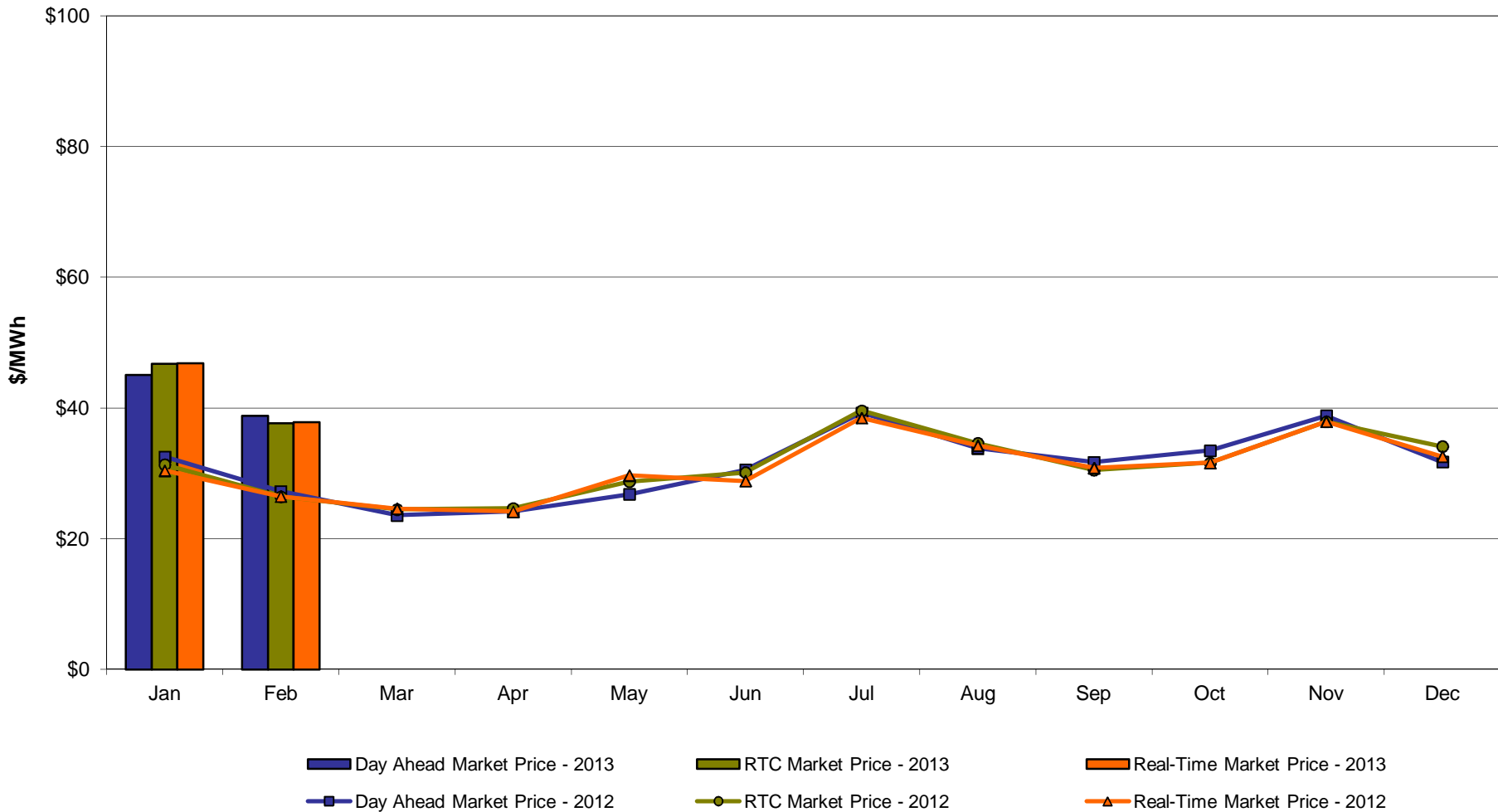


February 2013 Zonal LBMP Statistics for NYISO (\$/MWh)

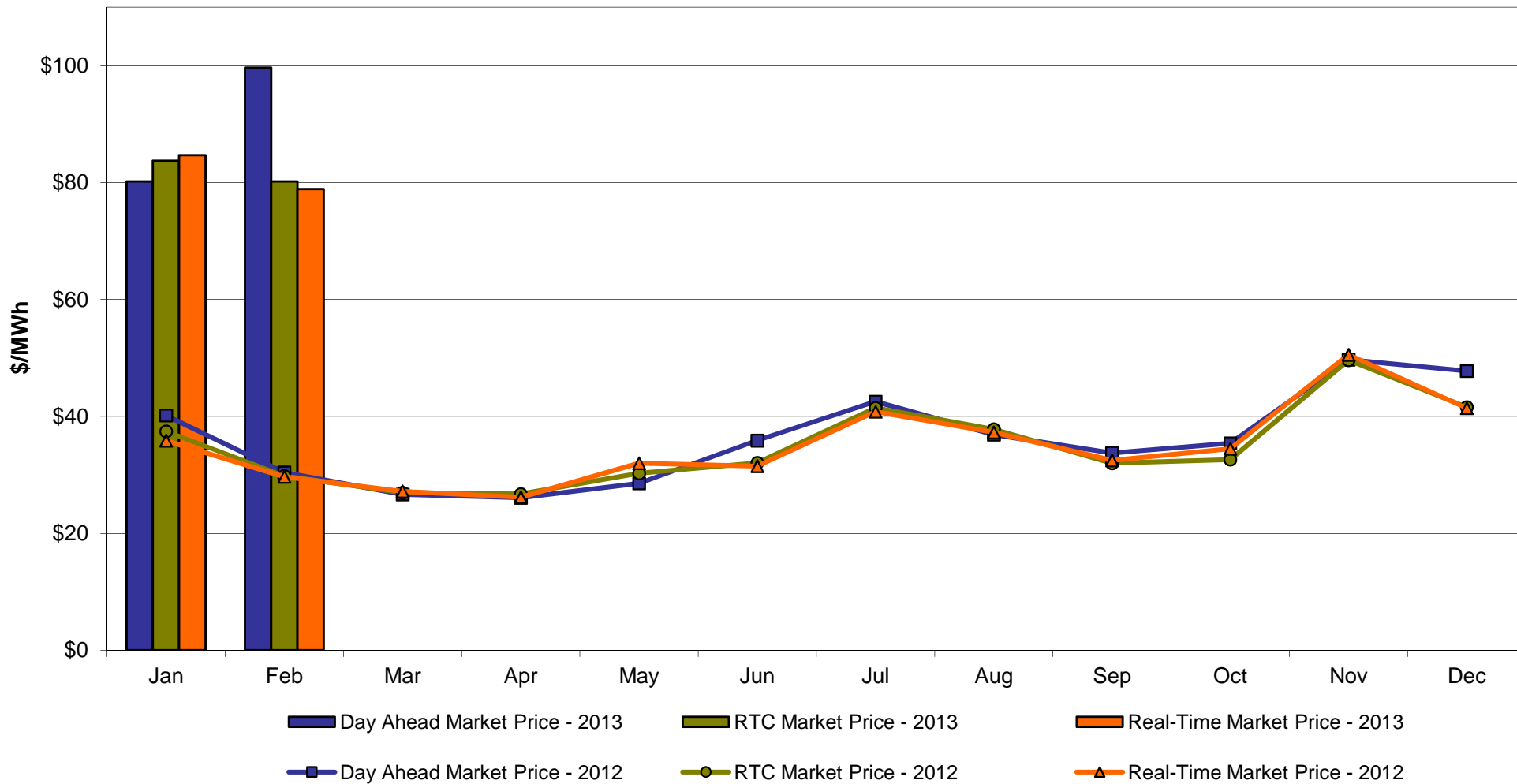
	<u>WEST Zone A</u>	<u>GENESEE Zone B</u>	<u>NORTH Zone D</u>	<u>CENTRAL Zone C</u>	<u>MOHAWK VALLEY Zone E</u>	<u>CAPITAL Zone F</u>	<u>HUDSON VALLEY Zone G</u>	<u>MILLWOOD Zone H</u>	<u>DUNWOODIE Zone I</u>	<u>NEW YORK CITY Zone J</u>	<u>LONG ISLAND Zone K</u>
DAY AHEAD LBMP											
Unweighted Price *	38.83	40.00	33.17	42.80	44.48	99.69	84.89	85.73	85.33	90.67	114.60
Standard Deviation	10.58	17.56	20.43	18.22	19.48	44.51	35.07	35.53	35.29	39.21	51.98
RTC LBMP											
Unweighted Price *	37.70	38.90	32.96	41.05	42.63	80.19	70.42	70.93	70.58	74.23	93.83
Standard Deviation	24.32	30.60	34.22	30.72	32.48	50.57	42.01	42.37	42.07	44.75	60.48
REAL TIME LBMP											
Unweighted Price *	37.84	39.16	33.23	41.32	42.97	78.89	69.67	70.18	69.83	73.12	105.61
Standard Deviation	23.59	28.80	32.52	29.13	30.72	51.50	41.90	42.31	42.01	43.57	102.87
	<u>ONTARIO IESO Zone O</u>	<u>HYDRO QUEBEC (Wheel) Zone M</u>	<u>HYDRO QUEBEC (Import/Export) Zone M</u>	<u>PJM Zone P</u>	<u>NEW ENGLAND Zone N</u>	<u>CROSS SOUND CABLE Controllable Line</u>	<u>NORTHPORT- NORWALK Controllable Line</u>	<u>NEPTUNE Controllable Line</u>	<u>LINDEN VFT Controllable Line</u>	<u>Dennison Controllable Line</u>	
DAY AHEAD LBMP											
Unweighted Price *	38.56	35.05	35.05	53.17	102.76	114.00	113.00	113.39	65.81	34.49	
Standard Deviation	10.72	19.56	19.56	18.98	45.17	51.85	49.73	51.76	36.25	19.49	
RTC LBMP											
Unweighted Price *	34.96	33.18	32.92	44.30	73.38	89.71	89.24	89.26	65.81	32.63	
Standard Deviation	17.68	23.03	23.04	18.28	39.11	50.19	50.10	50.11	31.38	21.25	
REAL TIME LBMP											
Unweighted Price *	37.94	35.18	34.96	45.70	99.80	101.46	98.71	102.73	65.47	35.15	
Standard Deviation	24.98	29.97	30.01	23.76	55.76	98.24	96.17	100.78	55.12	27.79	

* Straight LBMP averages

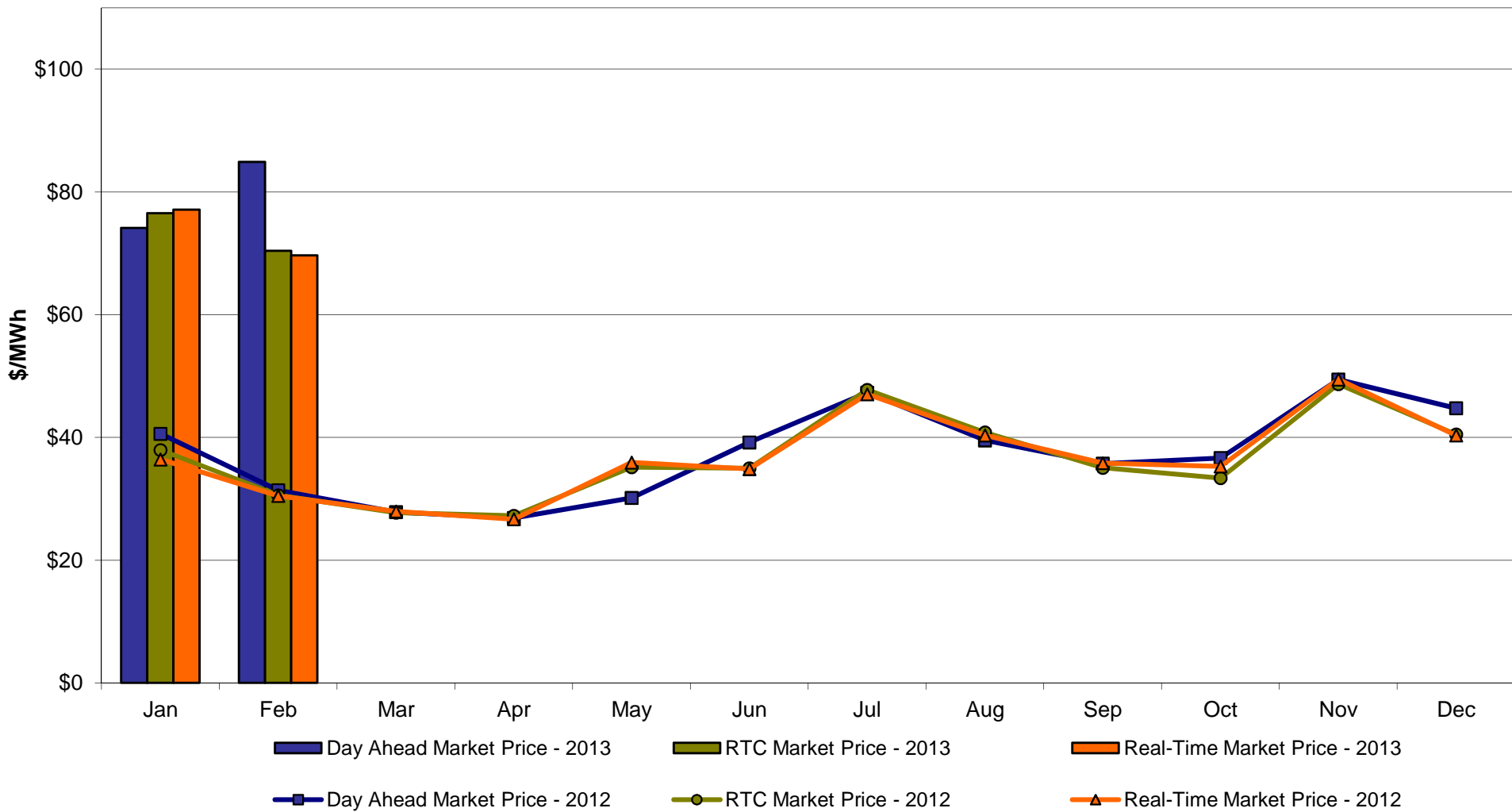
**West Zone A
Monthly Average LBMP Prices 2012 - 2013**



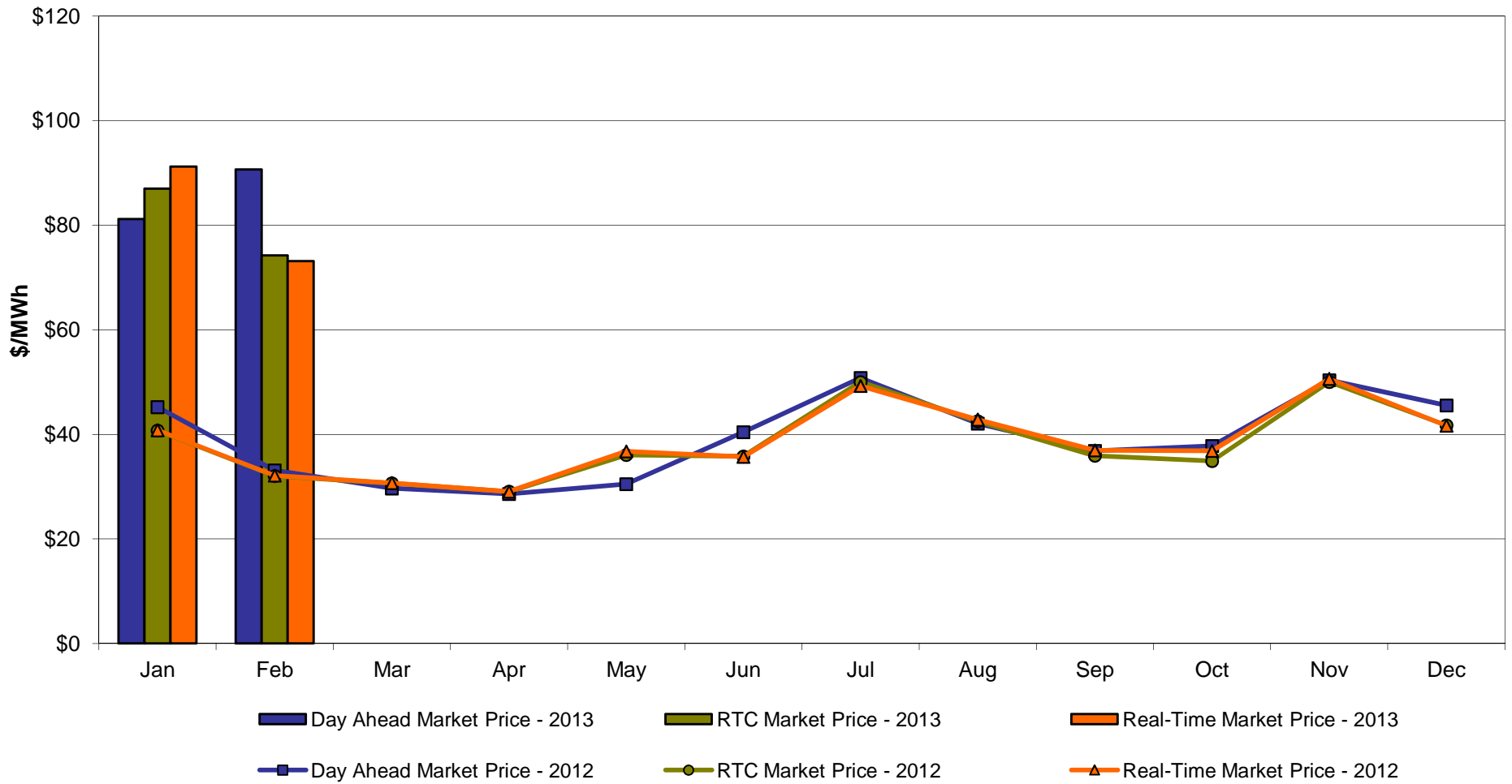
Capital Zone F Monthly Average LBMP Prices 2012 - 2013



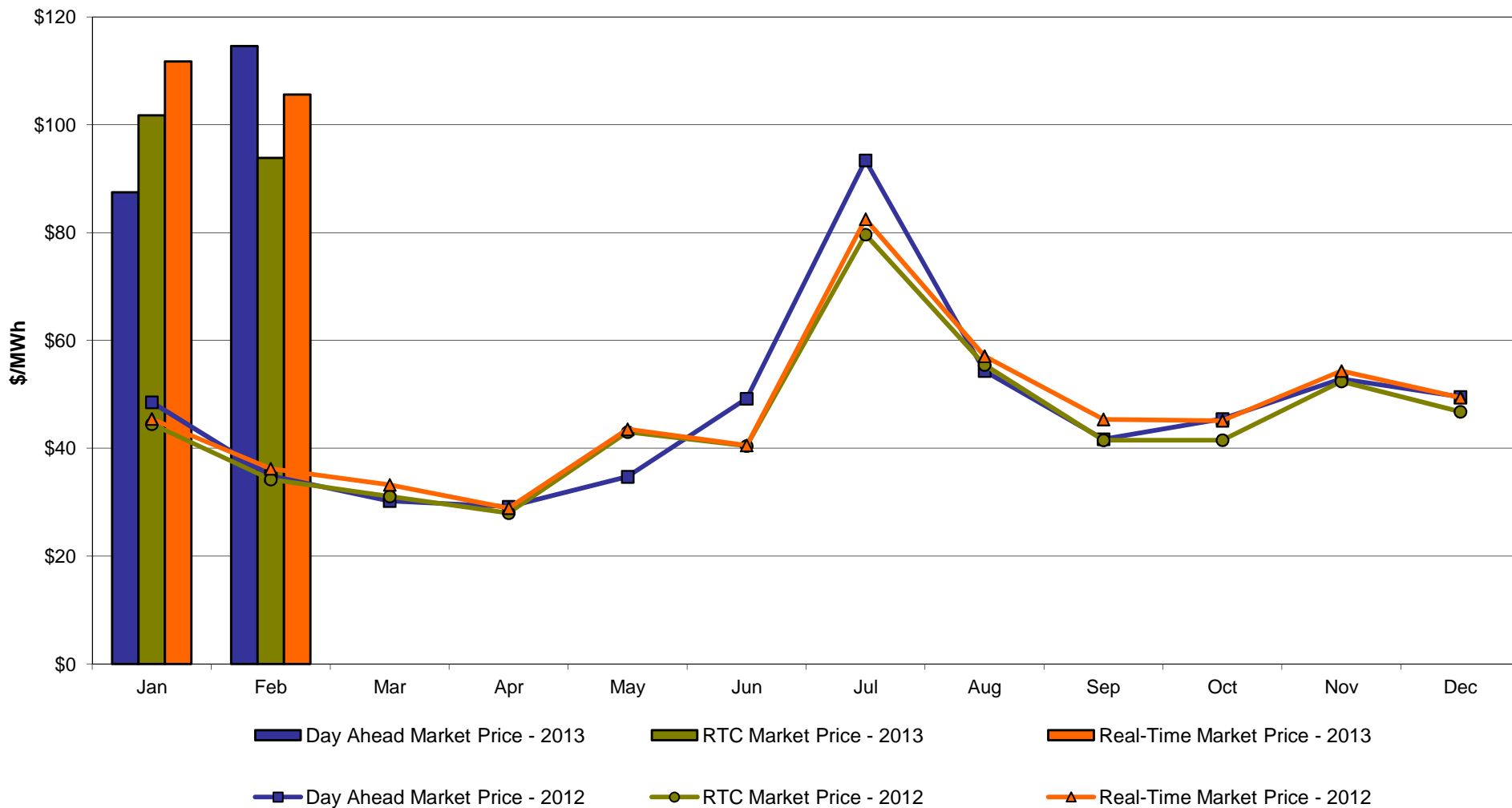
Hudson Valley Zone G Monthly Average LBMP Prices 2012 - 2013



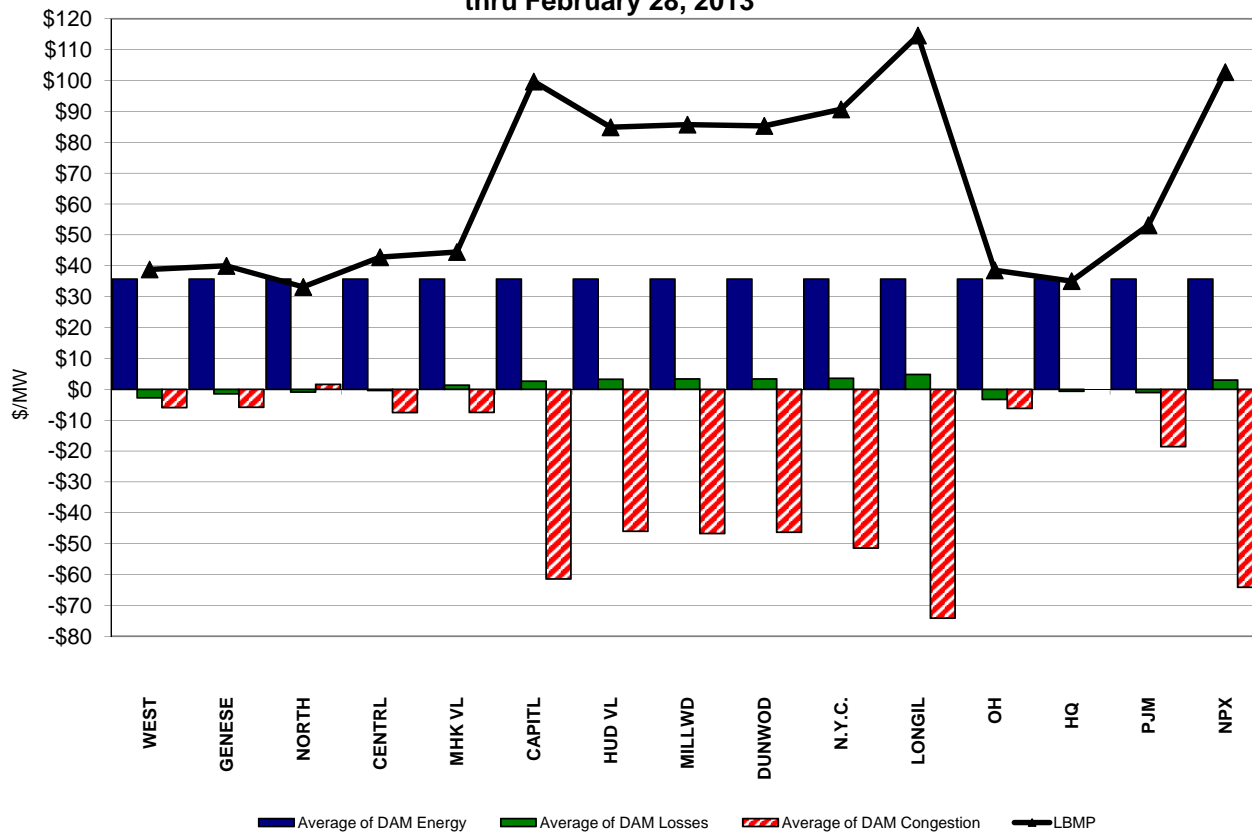
**NYC Zone J
Monthly Average LBMP Prices 2012 - 2013**



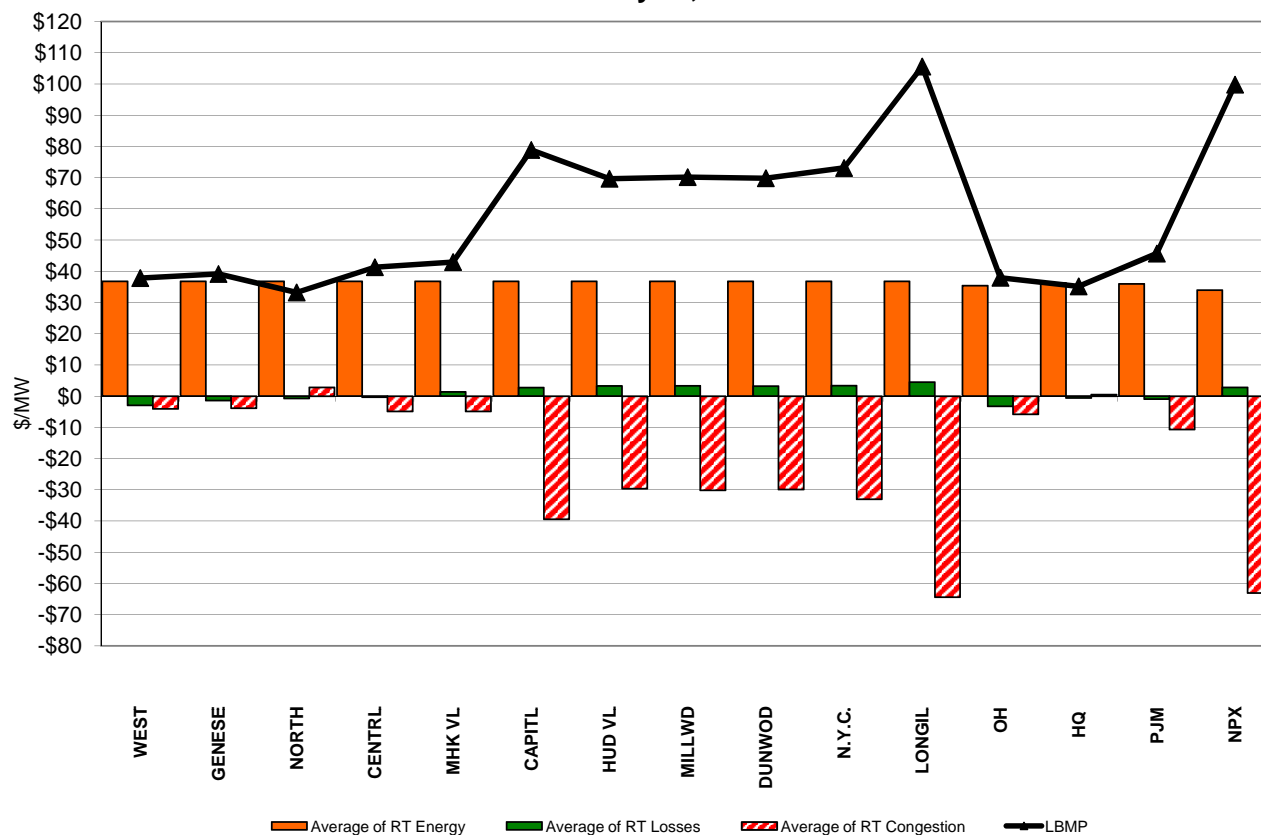
Long Island Zone K Monthly Average LBMP Prices 2012 - 2013



**DAM Zonal Unweighted Monthly Average LBMP Components
thru February 28, 2013**

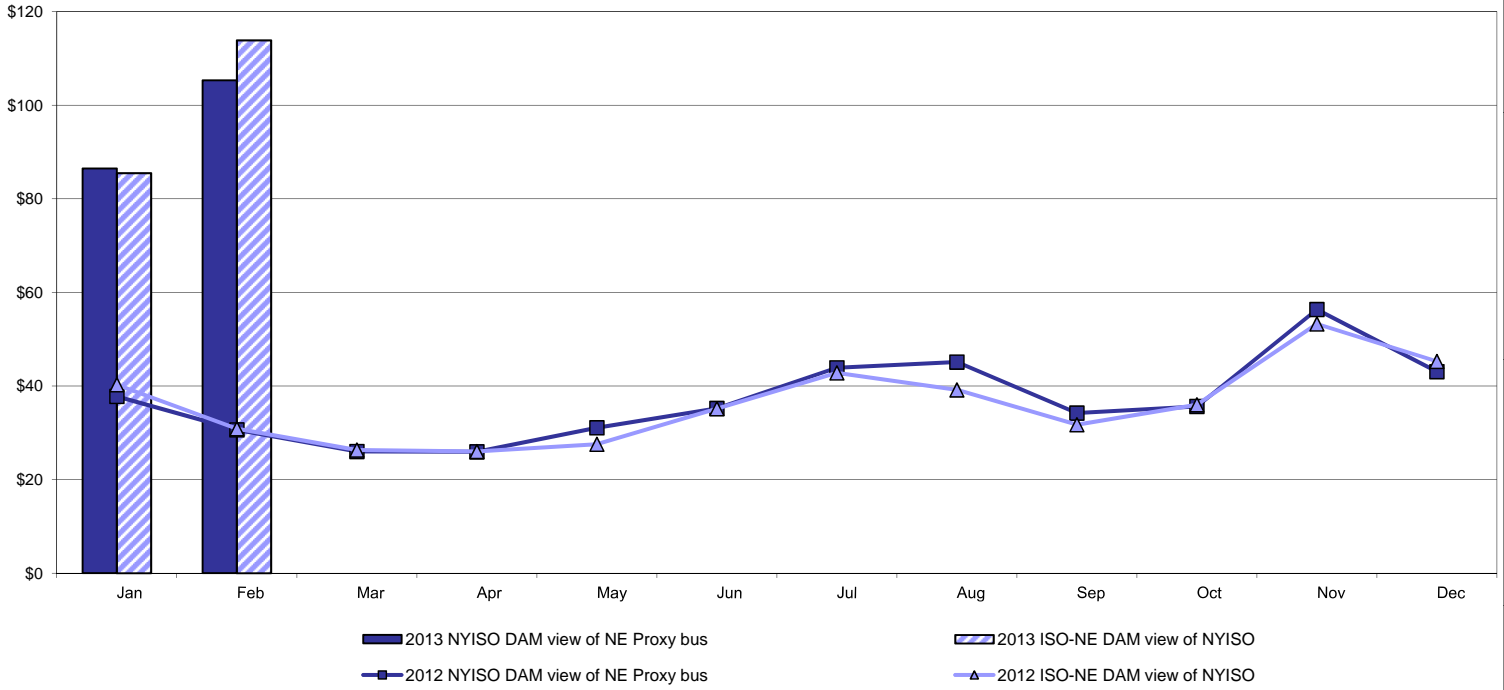


**RT Zonal Unweighted Monthly Average LBMP Components
thru February 28, 2013**

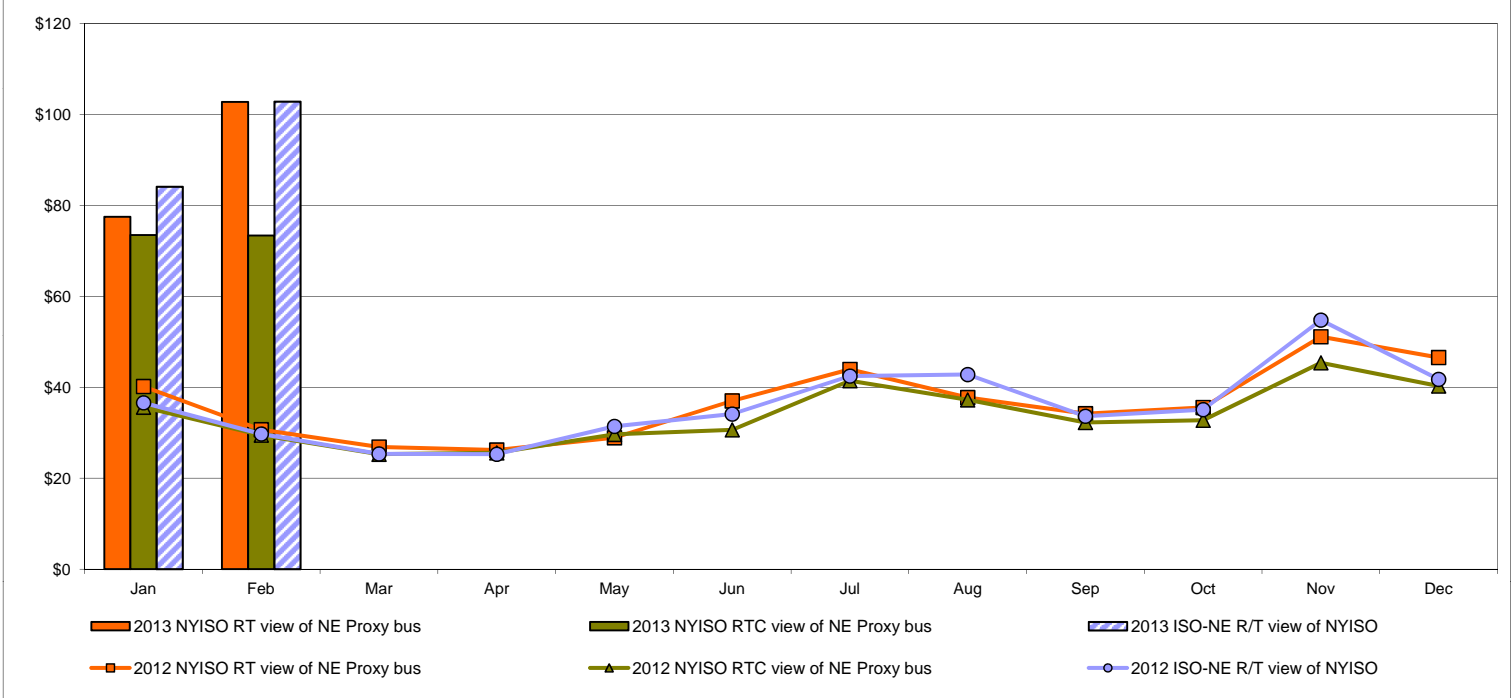


External Comparison ISO-New England

Day Ahead Market External Zone Comparison: ISO-NE (\$/MWh)

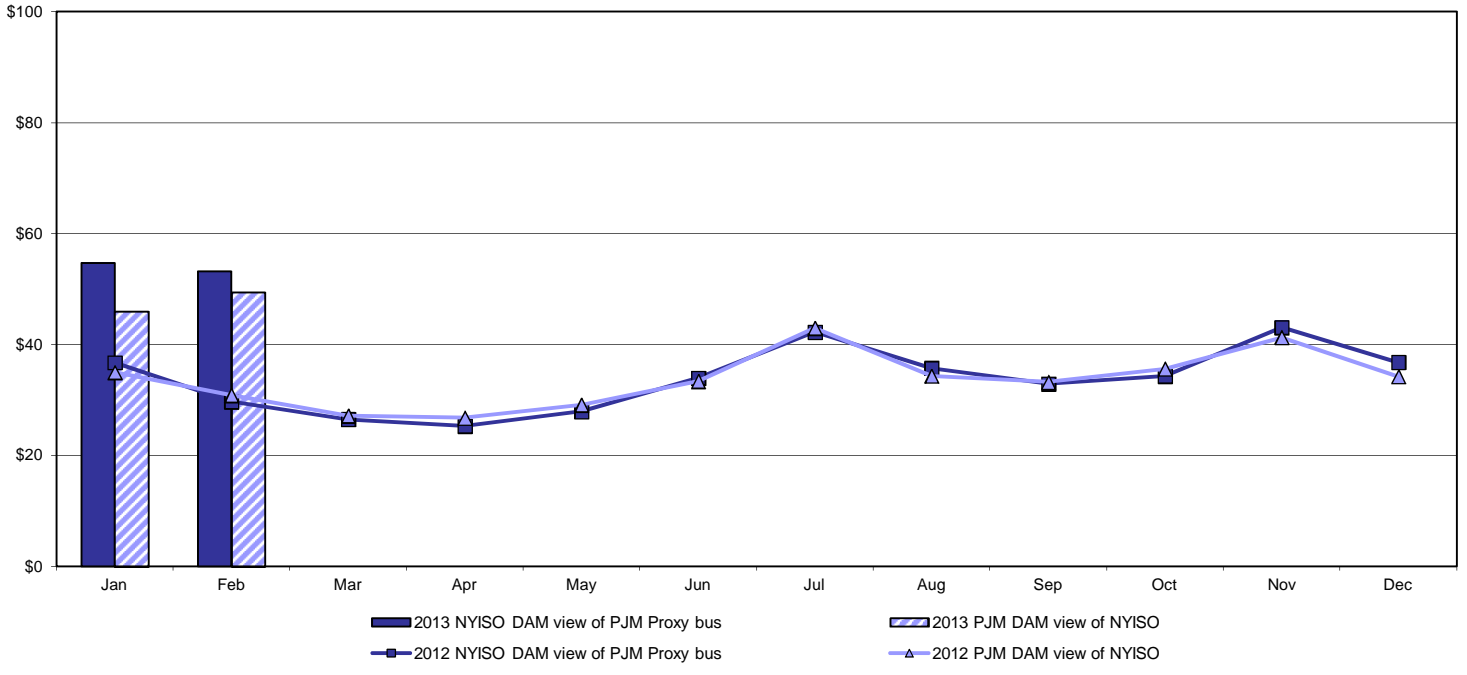


Real Time Market External Zone Comparison: ISO-NE (\$/MWh)

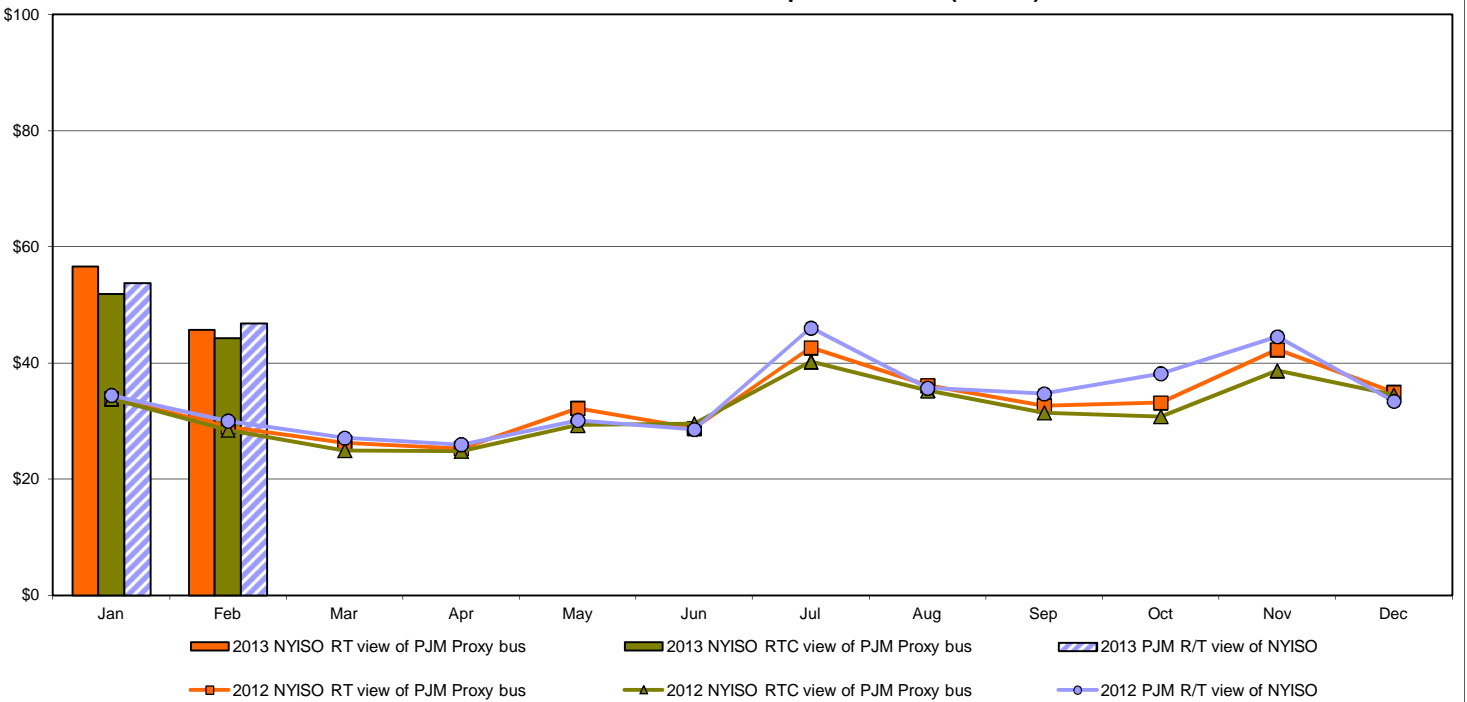


External Comparison PJM

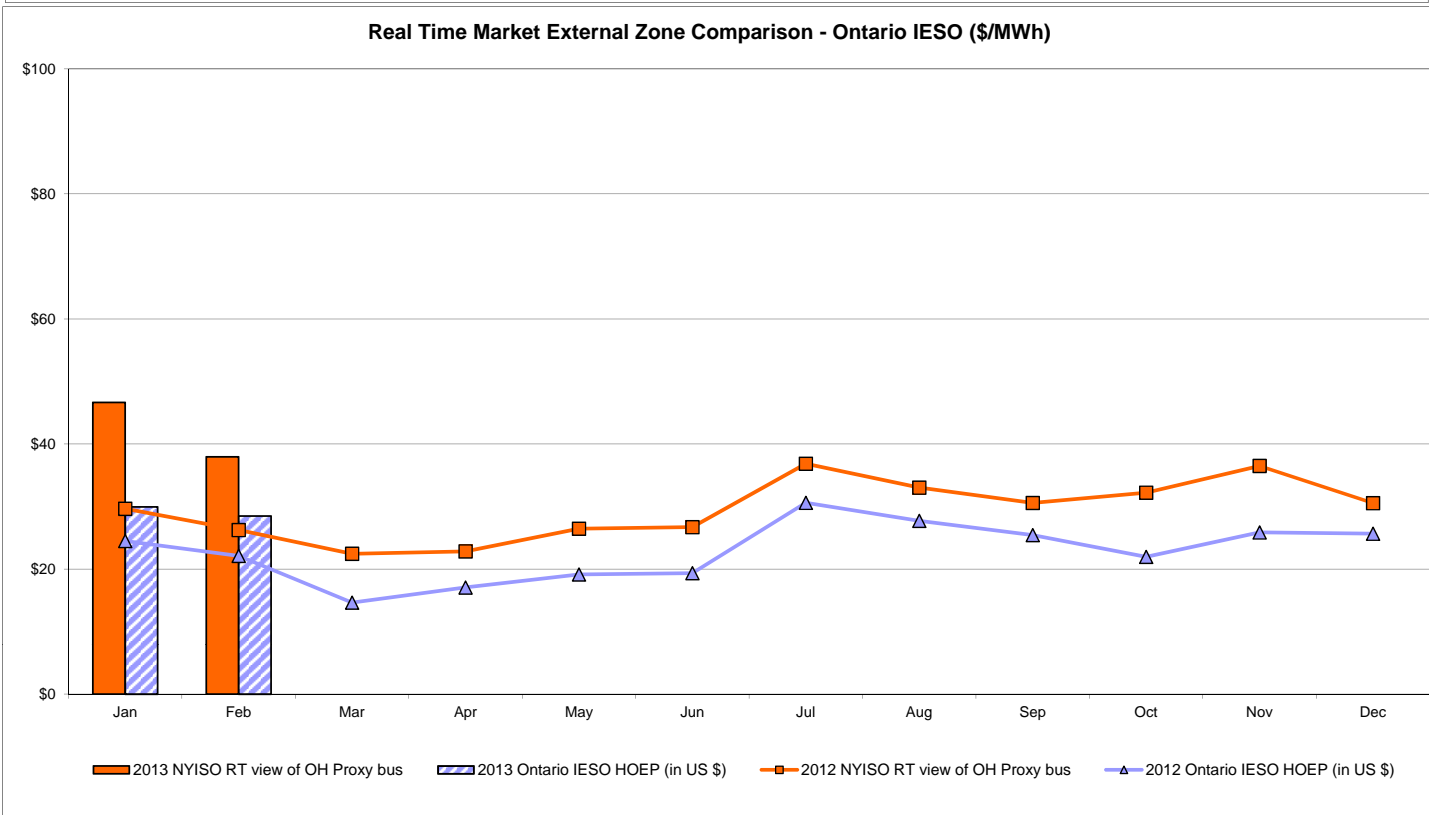
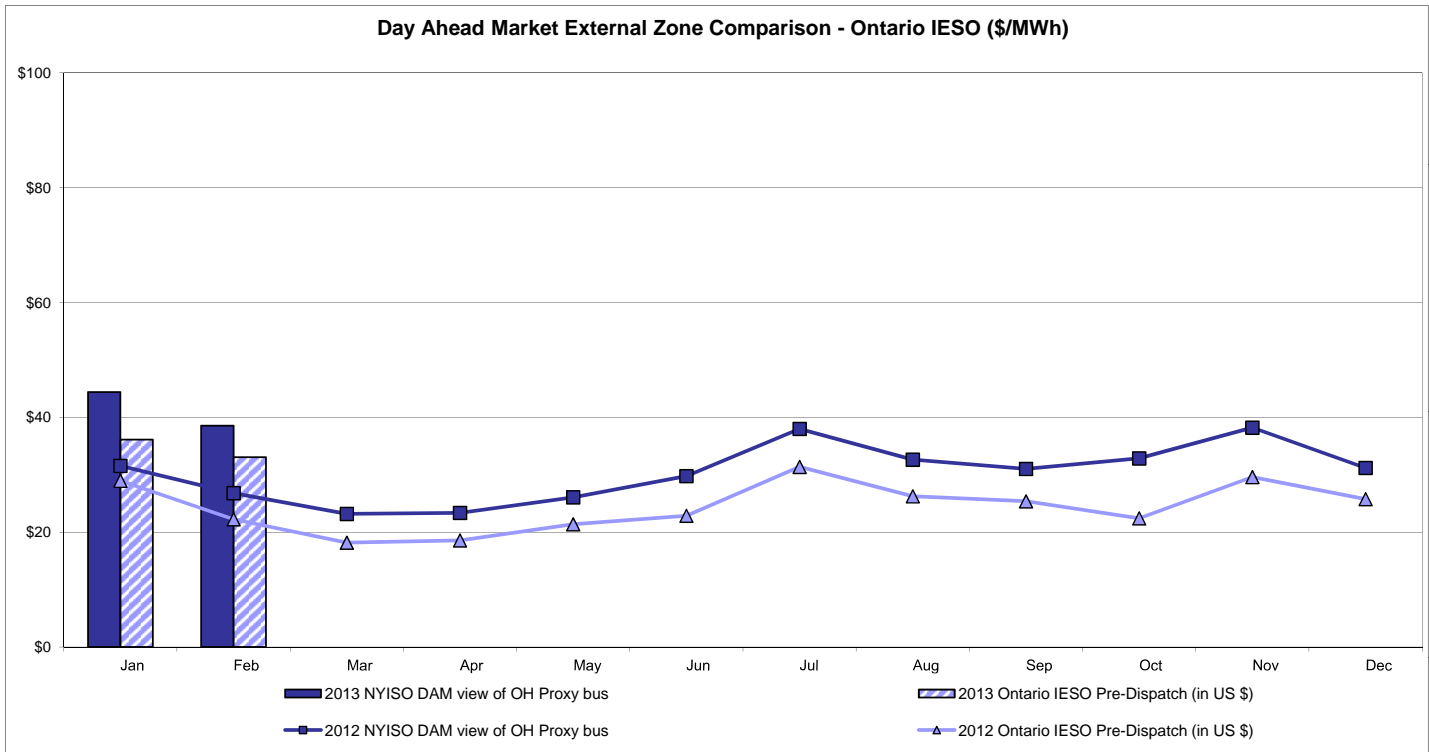
Day Ahead Market External Zone Comparison - PJM (\$/MWh)



Real Time Market External Zone Comparison - PJM (\$/MWh)

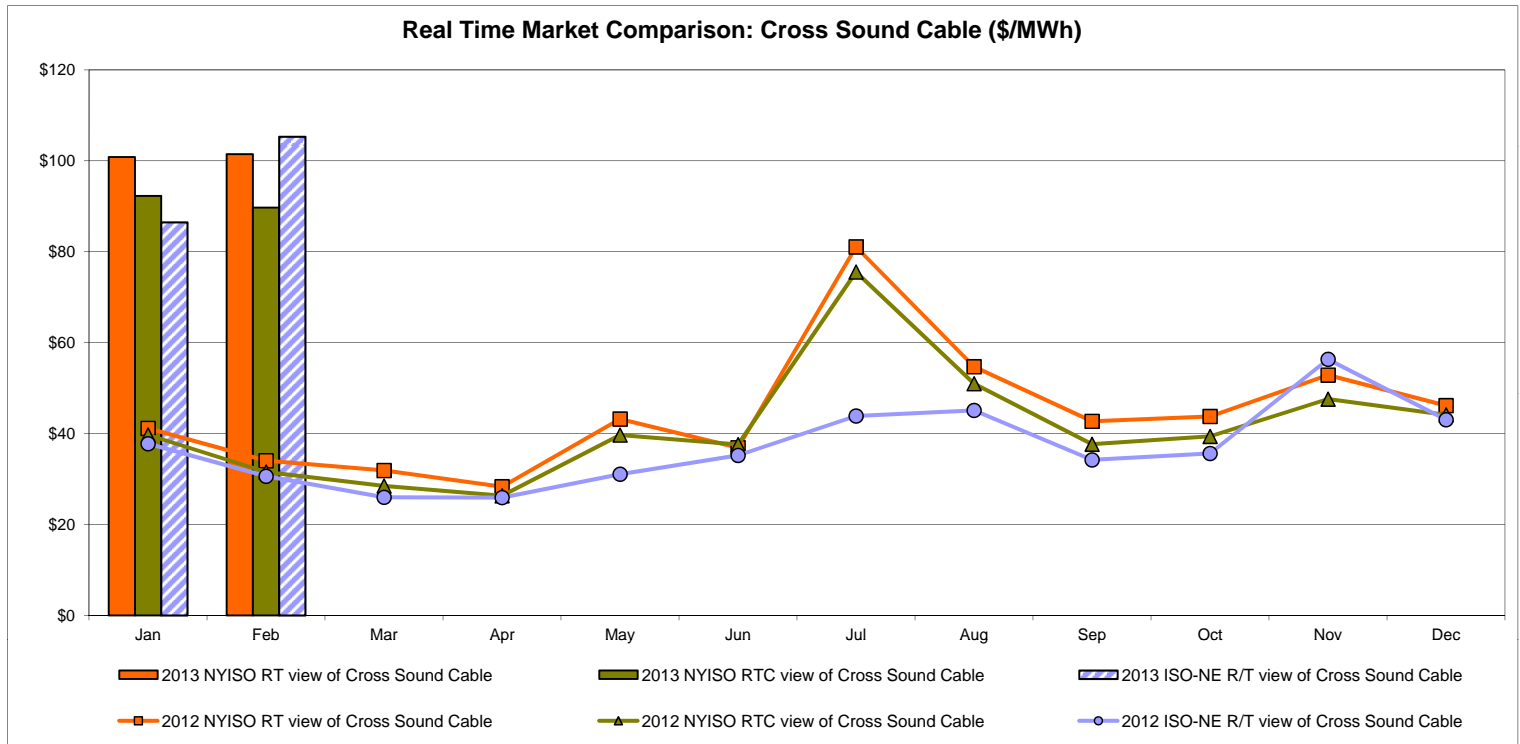
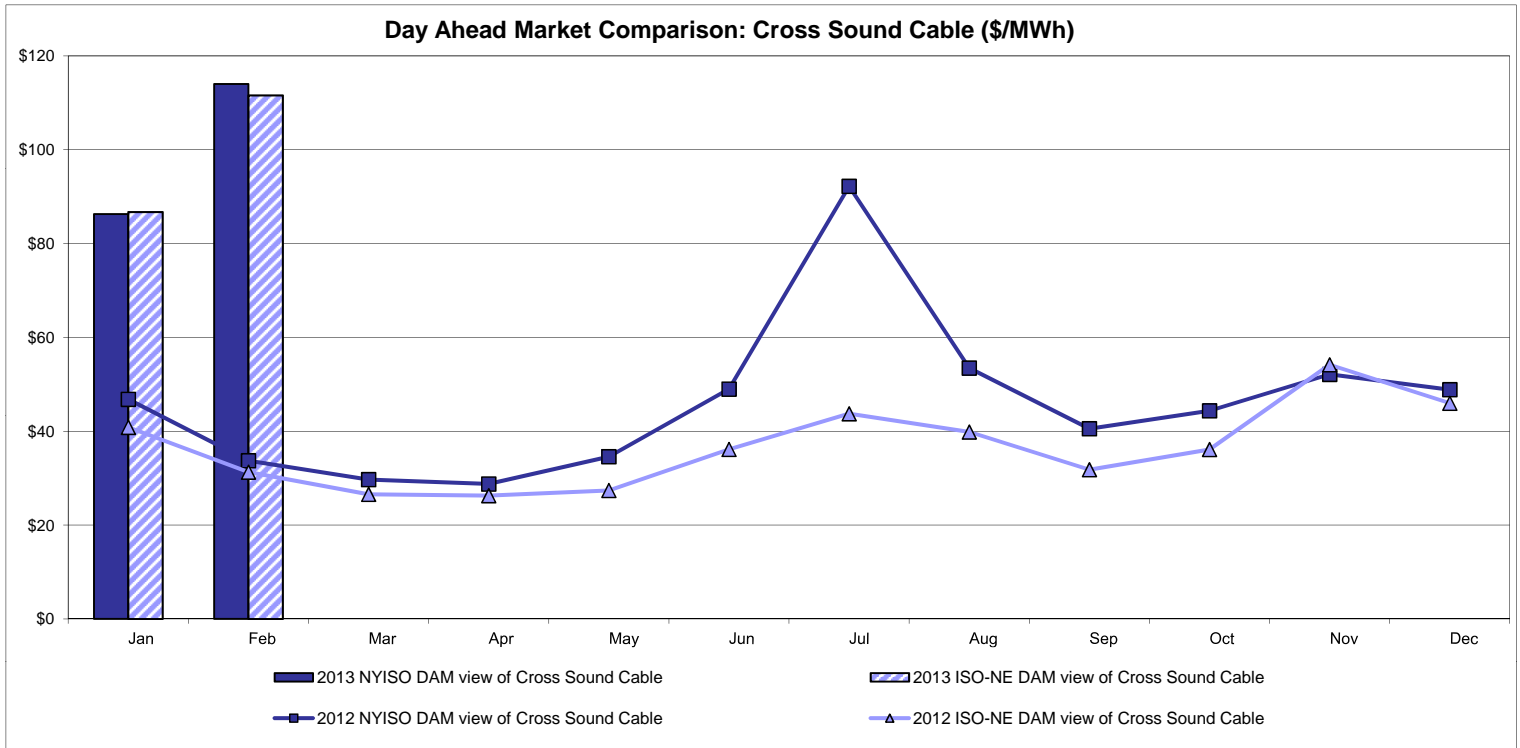


External Comparison Ontario IESO



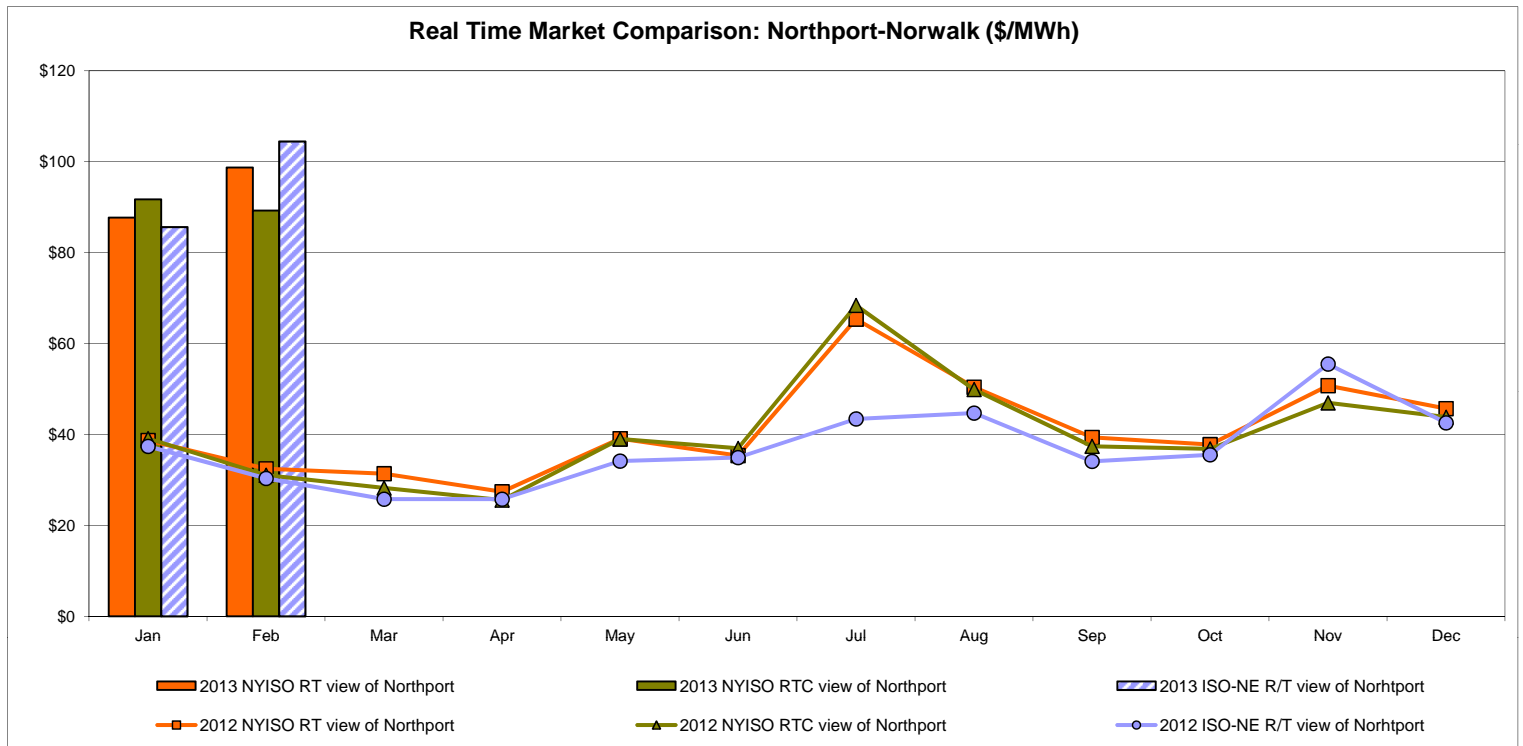
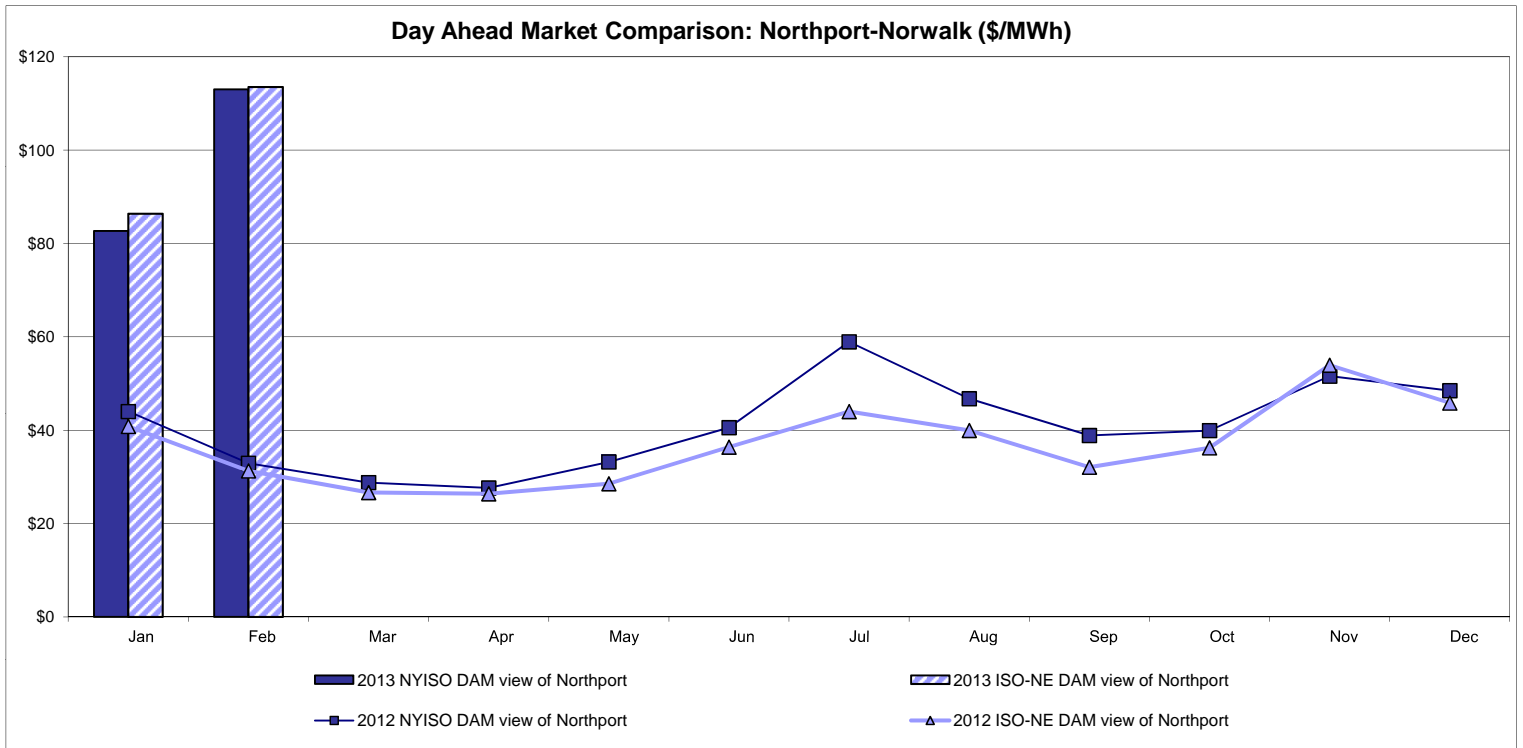
Notes: Exchange factor used for February 2013 was 0.9904 to US \$
 HOEP: Hourly Ontario Energy Price
 Pre-Dispatch: Projected Energy Price

External Controllable Line: Cross Sound Cable (New England)



Note:
 ISO-NE Forecast is an advisory posting @ 18:00 day before.
 The DAM and R/T prices at the Shorham 13899 interface are used for ISO-NE.
 The DAM and R/T prices at the CSC interface are used for NYISO.

External Controllable Line: Northport - Norwalk (New England)

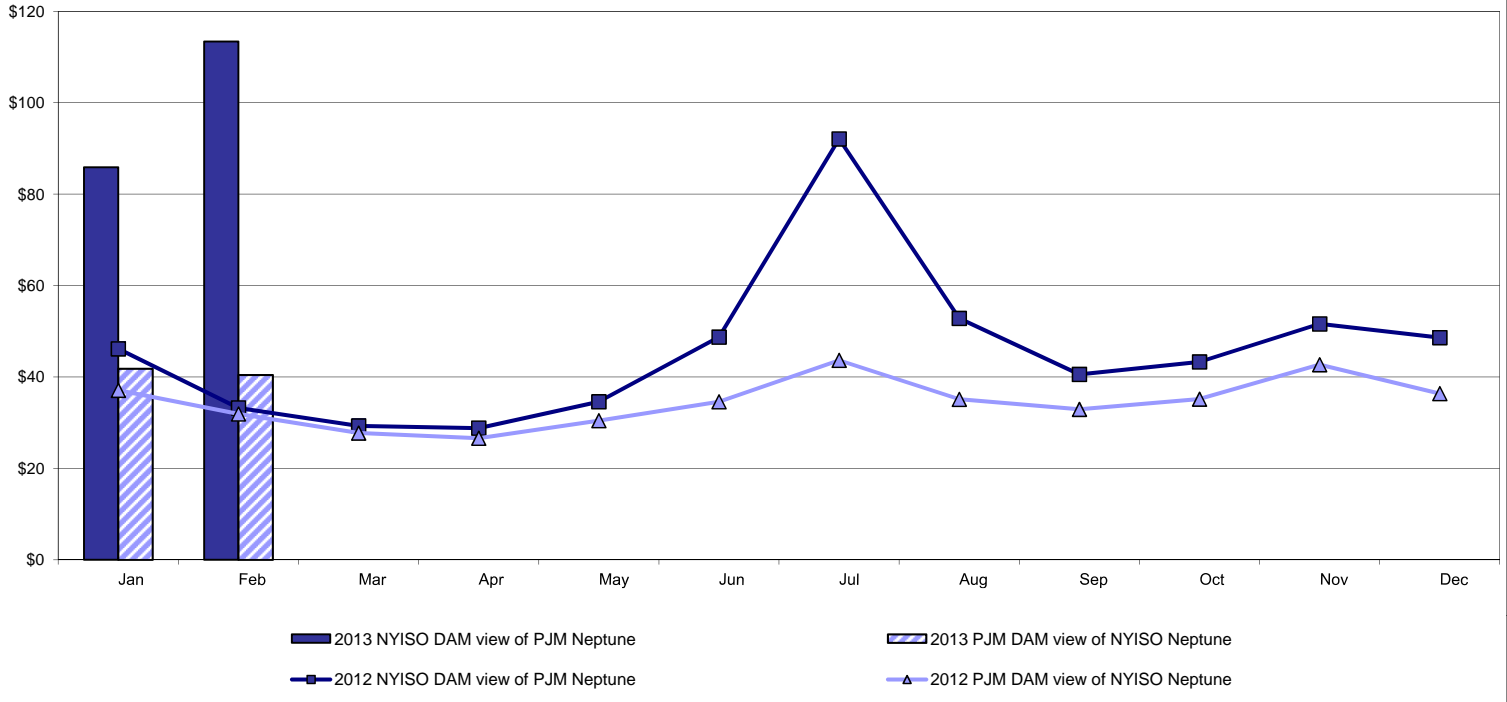


Note:

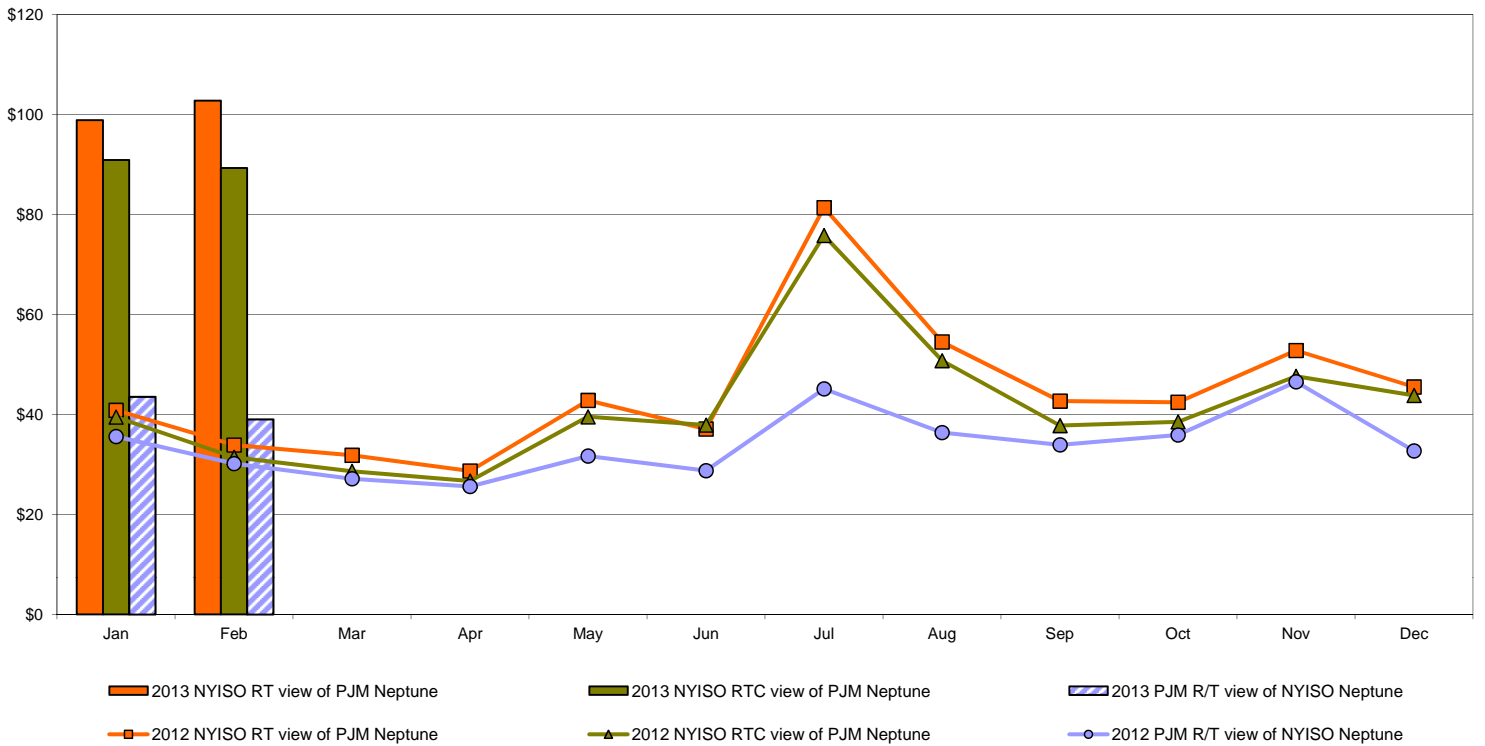
ISO-NE Forecast is an advisory posting @ 18:00 day before.
 The DAM and R/T prices at the Northport 138 interface are used for ISO-NE.
 The DAM and R/T prices at the 1385 interface are used for NYISO.

External Controllable Line: Neptune (PJM)

Day Ahead Market Comparison: Neptune (\$/MWh)

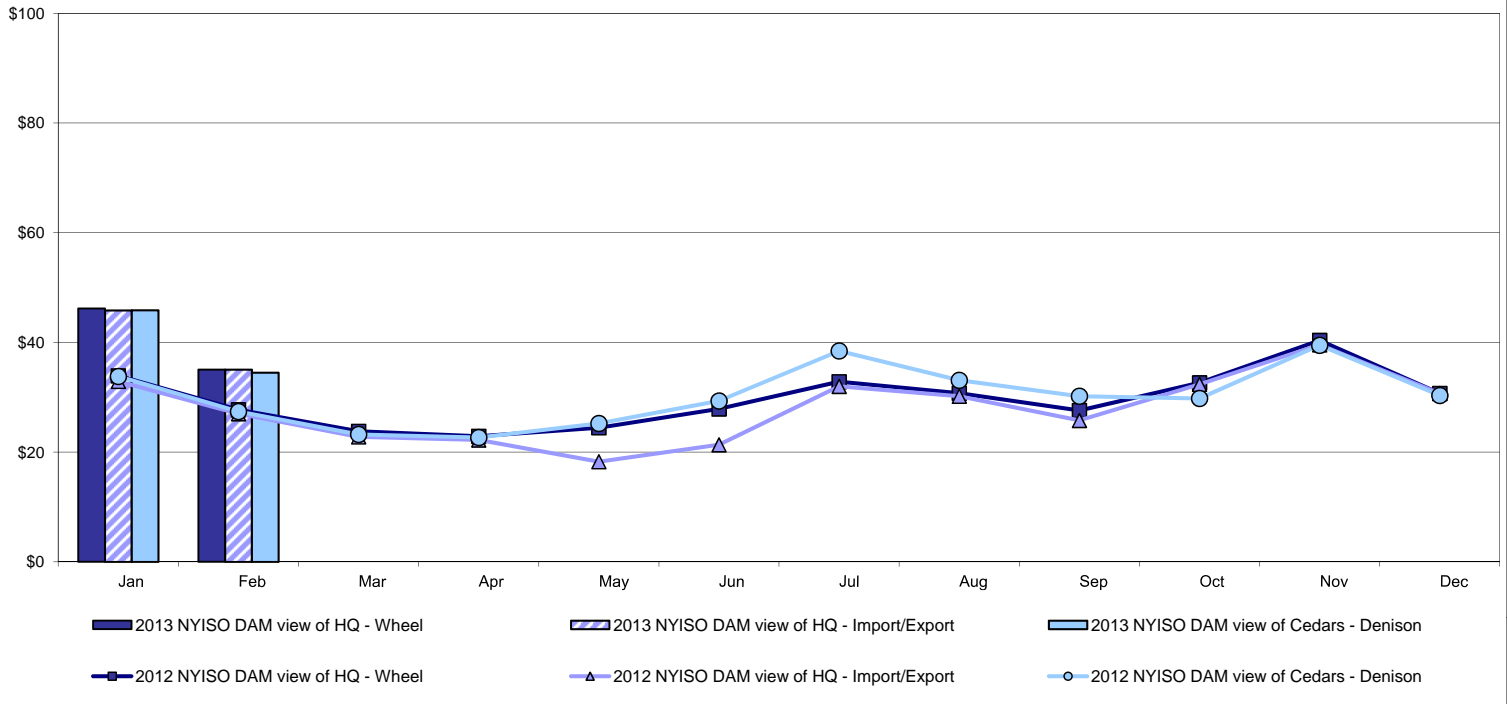


Real Time Market Comparison: Neptune (\$/MWh)

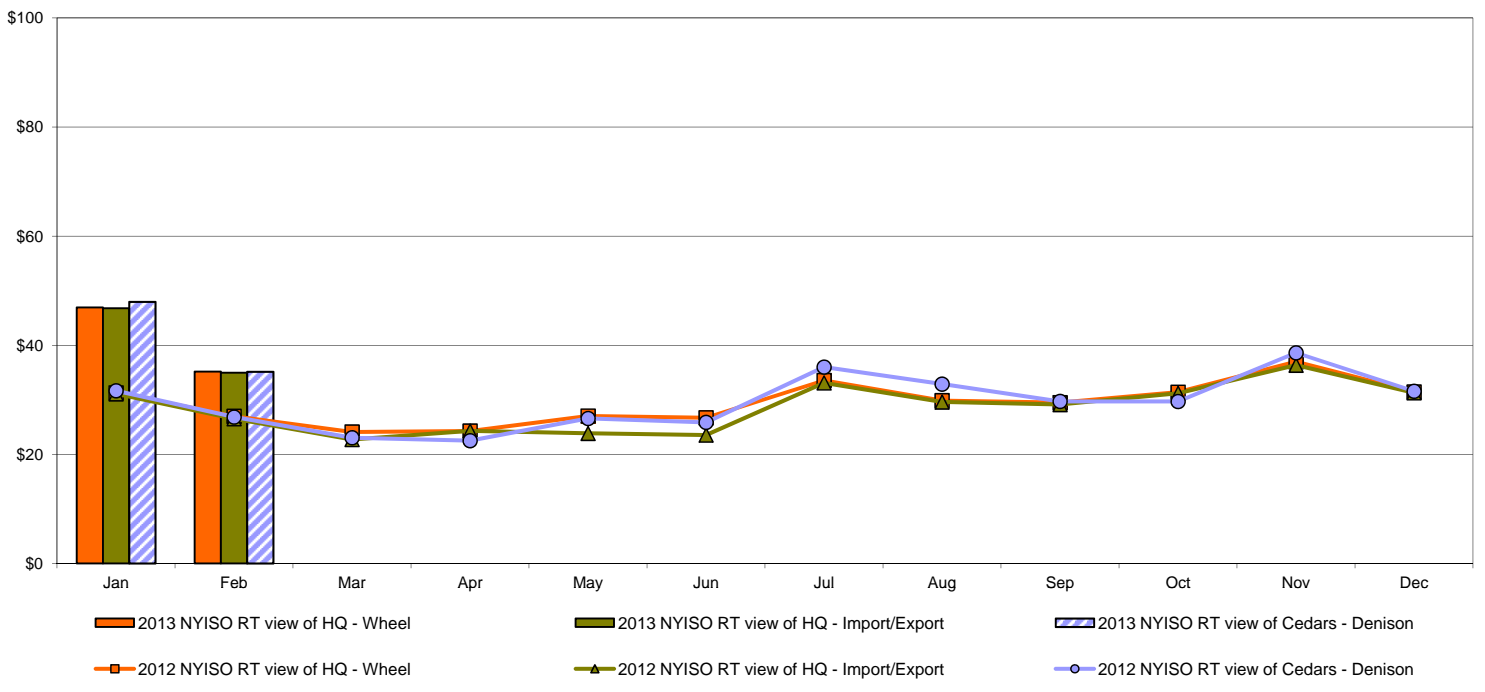


External Comparison Hydro-Quebec

Day Ahead Market External Zone Comparison - HQ (\$/MWh)

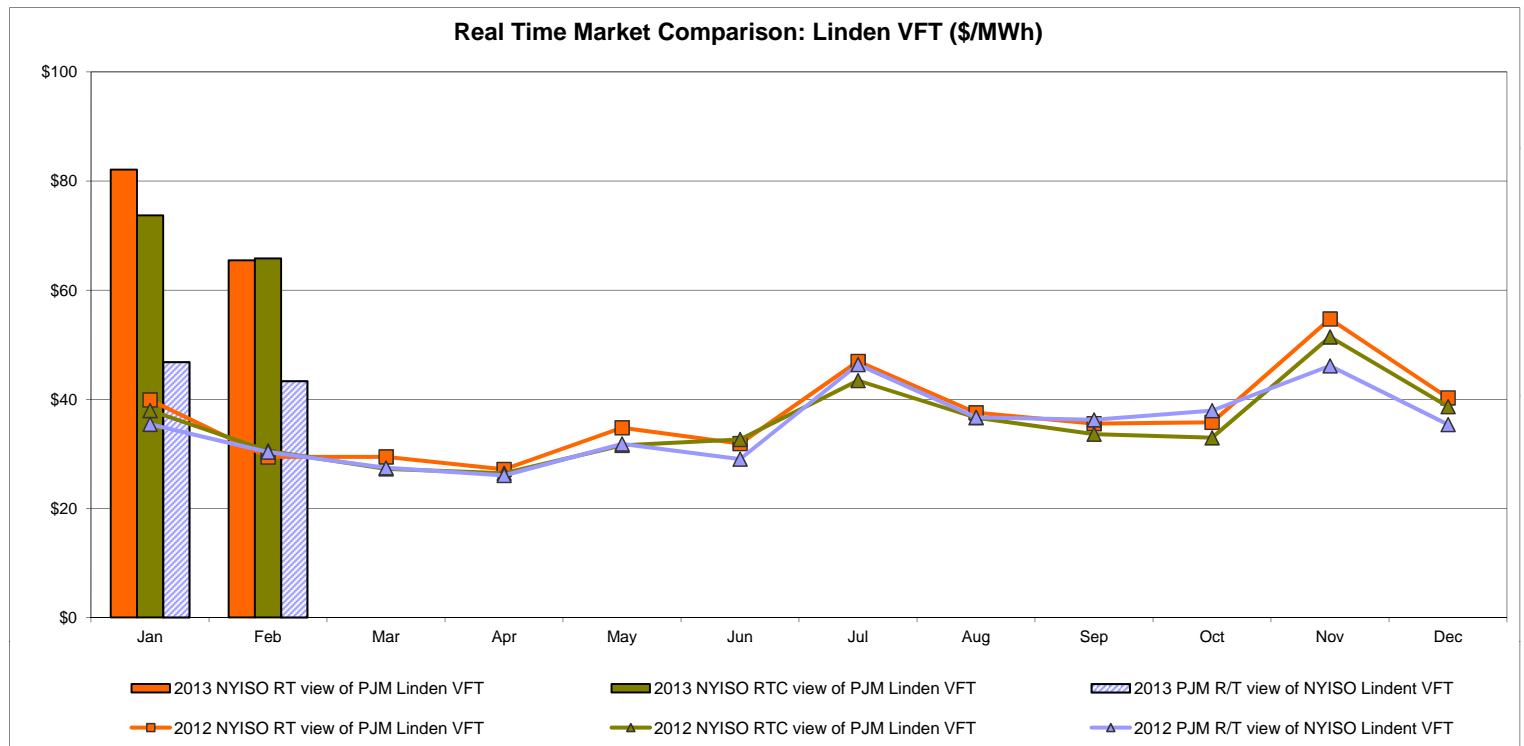
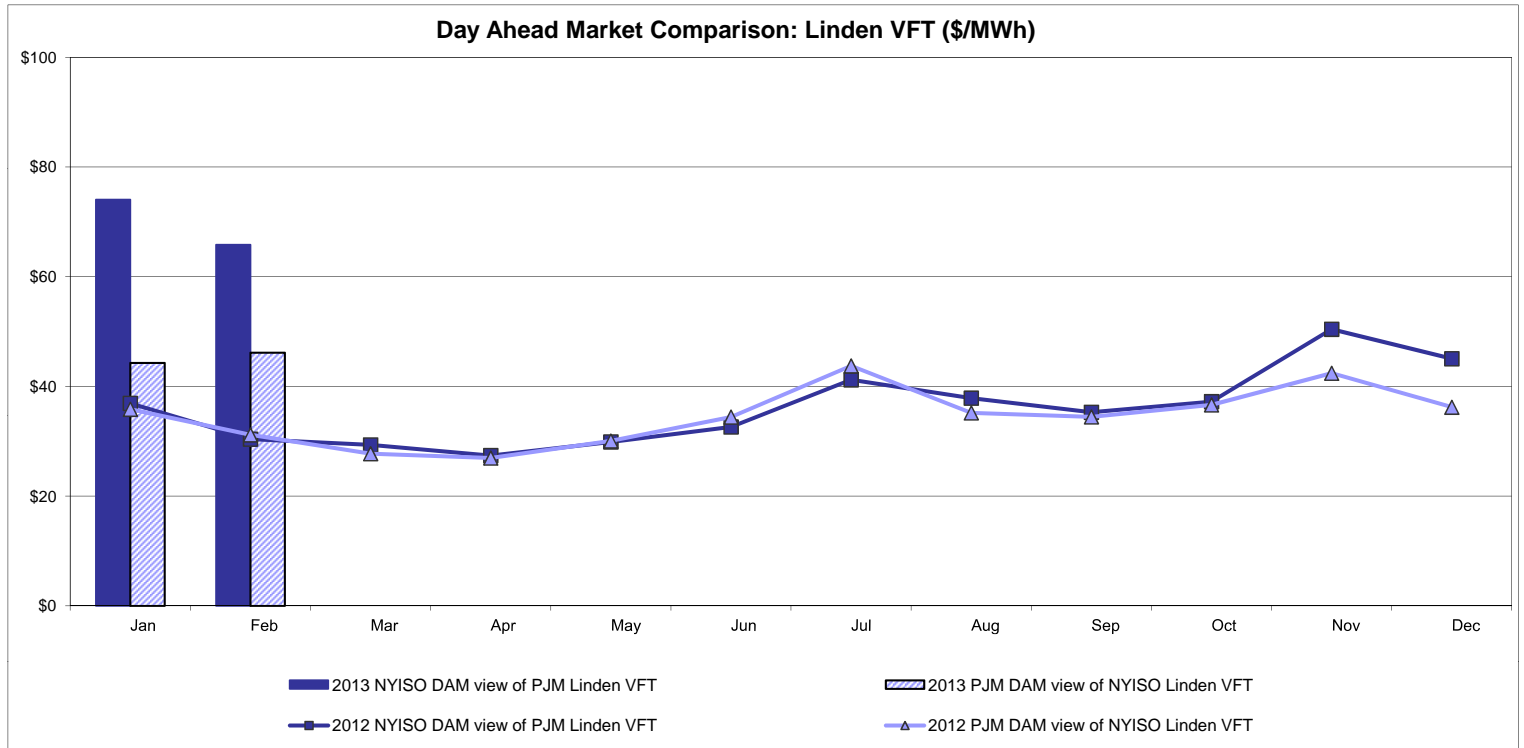


Real Time Market External Zone Comparison - HQ (\$/MWh)



Note:
Hydro-Quebec Prices are unavailable.

External Controllable Line: Linden VFT (PJM)

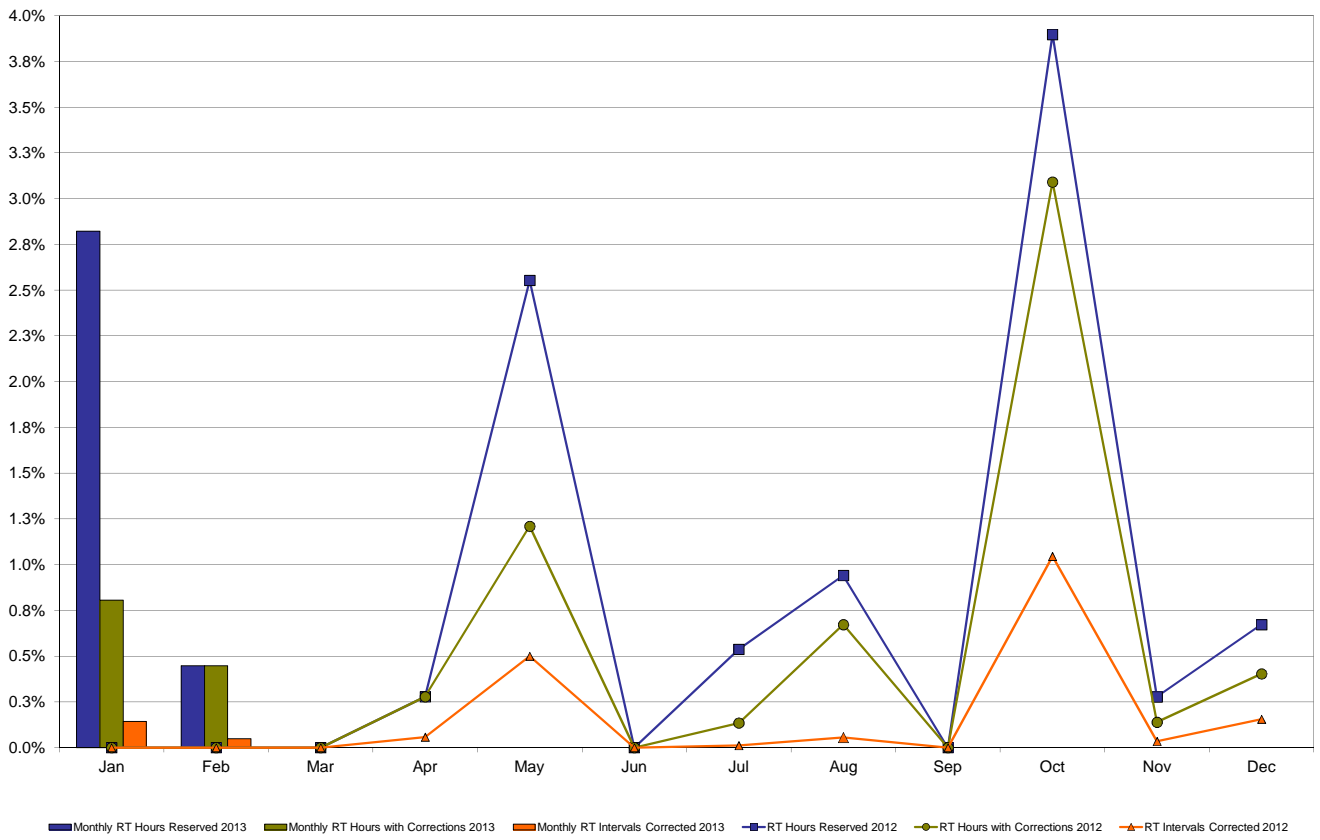


NYISO Real Time Price Correction Statistics

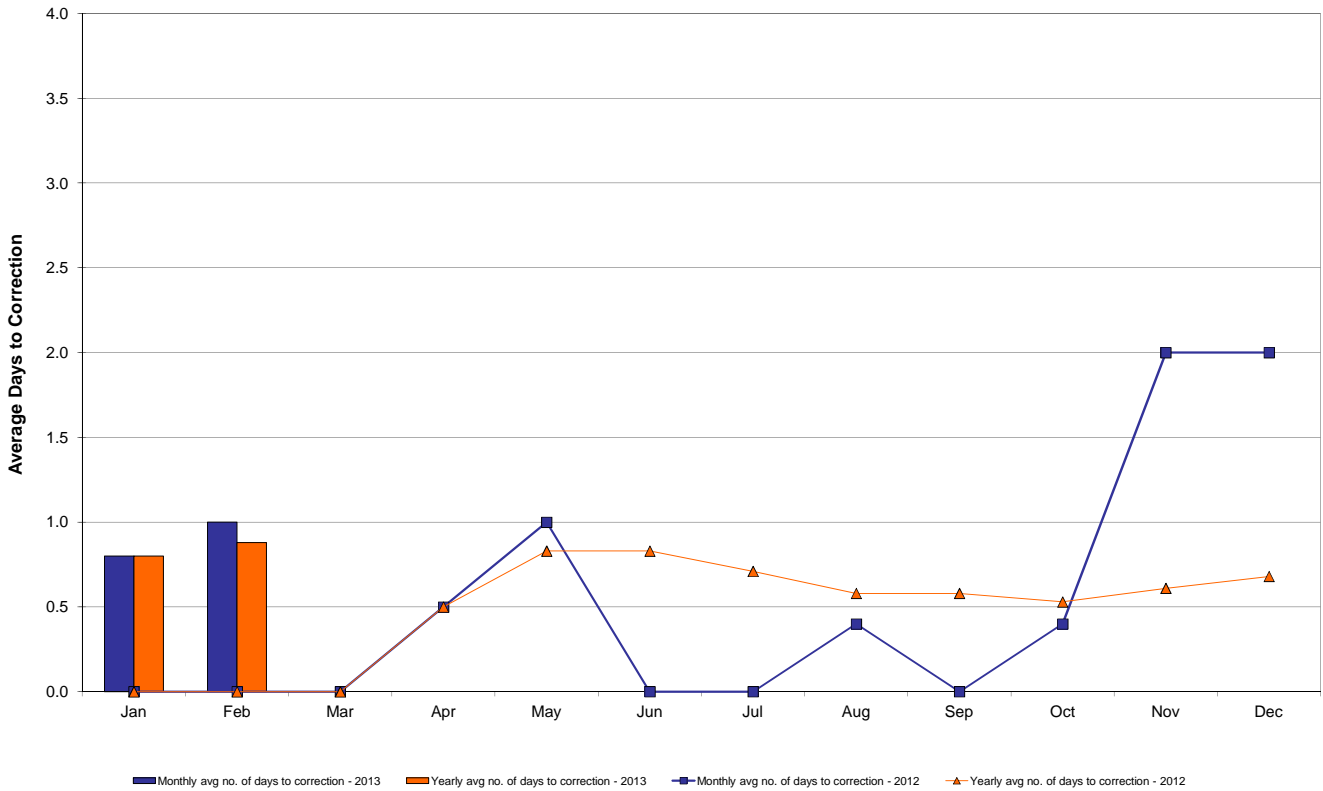
2013		<u>January</u>	<u>February</u>	<u>March</u>	<u>April</u>	<u>May</u>	<u>June</u>	<u>July</u>	<u>August</u>	<u>September</u>	<u>October</u>	<u>November</u>	<u>December</u>
Hour Corrections													
Number of hours with corrections	in the month	6	3										
Number of hours	in the month	744	672										
% of hours with corrections	in the month	0.81%	0.45%										
% of hours with corrections	year-to-date	0.81%	0.64%										
Interval Corrections													
Number of intervals corrected	in the month	13	4										
Number of intervals	in the month	9,104	8,230										
% of intervals corrected	in the month	0.14%	0.05%										
% of intervals corrected	year-to-date	0.14%	0.10%										
Hours Reserved													
Number of hours reserved	in the month	21	3										
Number of hours	in the month	744	672										
% of hours reserved	in the month	2.82%	0.45%										
% of hours reserved	year-to-date	2.82%	1.69%										
Days to Correction *													
Avg. number of days to correction	in the month	0.80	1.00										
Avg. number of days to correction	year-to-date	0.80	0.88										
Days Without Corrections													
Days without corrections	in the month	26	25										
Days without corrections	year-to-date	26	51										
2012		<u>January</u>	<u>February</u>	<u>March</u>	<u>April</u>	<u>May</u>	<u>June</u>	<u>July</u>	<u>August</u>	<u>September</u>	<u>October</u>	<u>November</u>	<u>December</u>
Hour Corrections													
Number of hours with corrections	in the month	0	0	0	2	9	0	1	5	0	23	1	3
Number of hours	in the month	744	696	743	720	744	720	744	744	720	744	721	744
% of hours with corrections	in the month	0.00%	0.00%	0.00%	0.28%	1.21%	0.00%	0.13%	0.67%	0.00%	3.09%	0.14%	0.40%
% of hours with corrections	year-to-date	0.00%	0.00%	0.00%	0.07%	0.30%	0.25%	0.23%	0.29%	0.26%	0.55%	0.51%	0.50%
Interval Corrections													
Number of intervals corrected	in the month	0	0	0	5	45	0	1	5	0	94	3	14
Number of intervals	in the month	9,025	8,399	8,977	8,716	9,013	8,786	9,100	9,044	8,724	8,987	8,856	9,036
% of intervals corrected	in the month	0.00%	0.00%	0.00%	0.06%	0.50%	0.00%	0.01%	0.06%	0.00%	1.05%	0.03%	0.15%
% of intervals corrected	year-to-date	0.00%	0.00%	0.00%	0.01%	0.11%	0.09%	0.08%	0.08%	0.07%	0.17%	0.16%	0.16%
Hours Reserved													
Number of hours reserved	in the month	0	0	0	2	19	0	4	7	0	29	2	5
Number of hours	in the month	744	696	743	720	744	720	744	744	720	744	721	744
% of hours reserved	in the month	0.00%	0.00%	0.00%	0.28%	2.55%	0.00%	0.54%	0.94%	0.00%	3.90%	0.28%	0.67%
% of hours reserved	year-to-date	0.00%	0.00%	0.00%	0.07%	0.58%	0.48%	0.49%	0.55%	0.49%	0.83%	0.78%	0.77%
Days to Correction *													
Avg. number of days to correction	in the month	0.00	0.00	0.00	0.50	1.00	0.00	0.00	0.40	0.00	0.40	2.00	2.00
Avg. number of days to correction	year-to-date	0.00	0.00	0.00	0.50	0.83	0.83	0.71	0.58	0.58	0.53	0.61	0.68
Days Without Corrections													
Days without corrections	in the month	31	29	31	28	27	30	30	26	30	27	29	30
Days without corrections	year-to-date	31	60	91	119	146	176	206	232	262	289	318	348

* Calendar days from reservation date.

Percentage of Real-Time Corrections

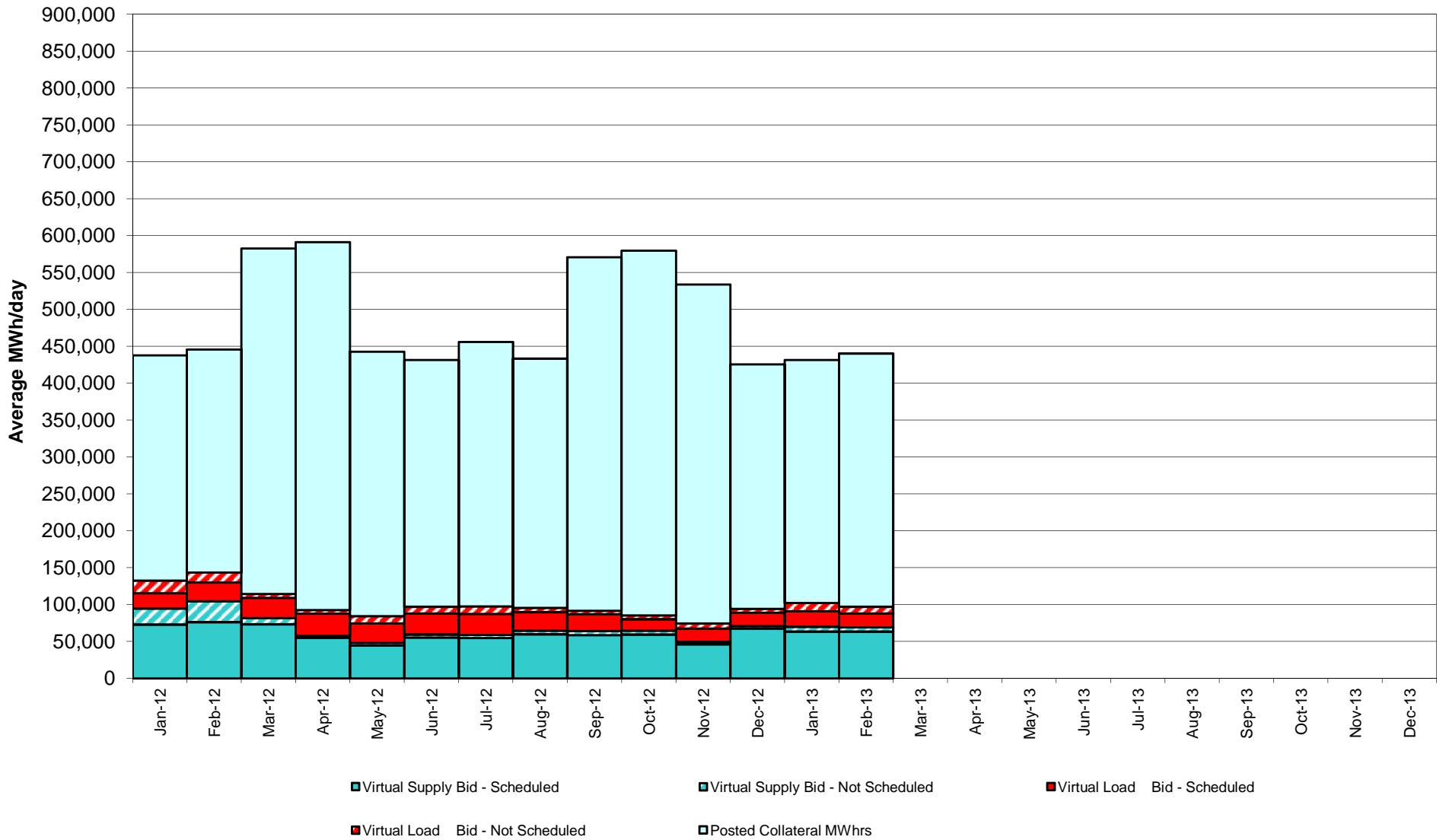


Annual average time period for making Price Corrections (from reservation date) *

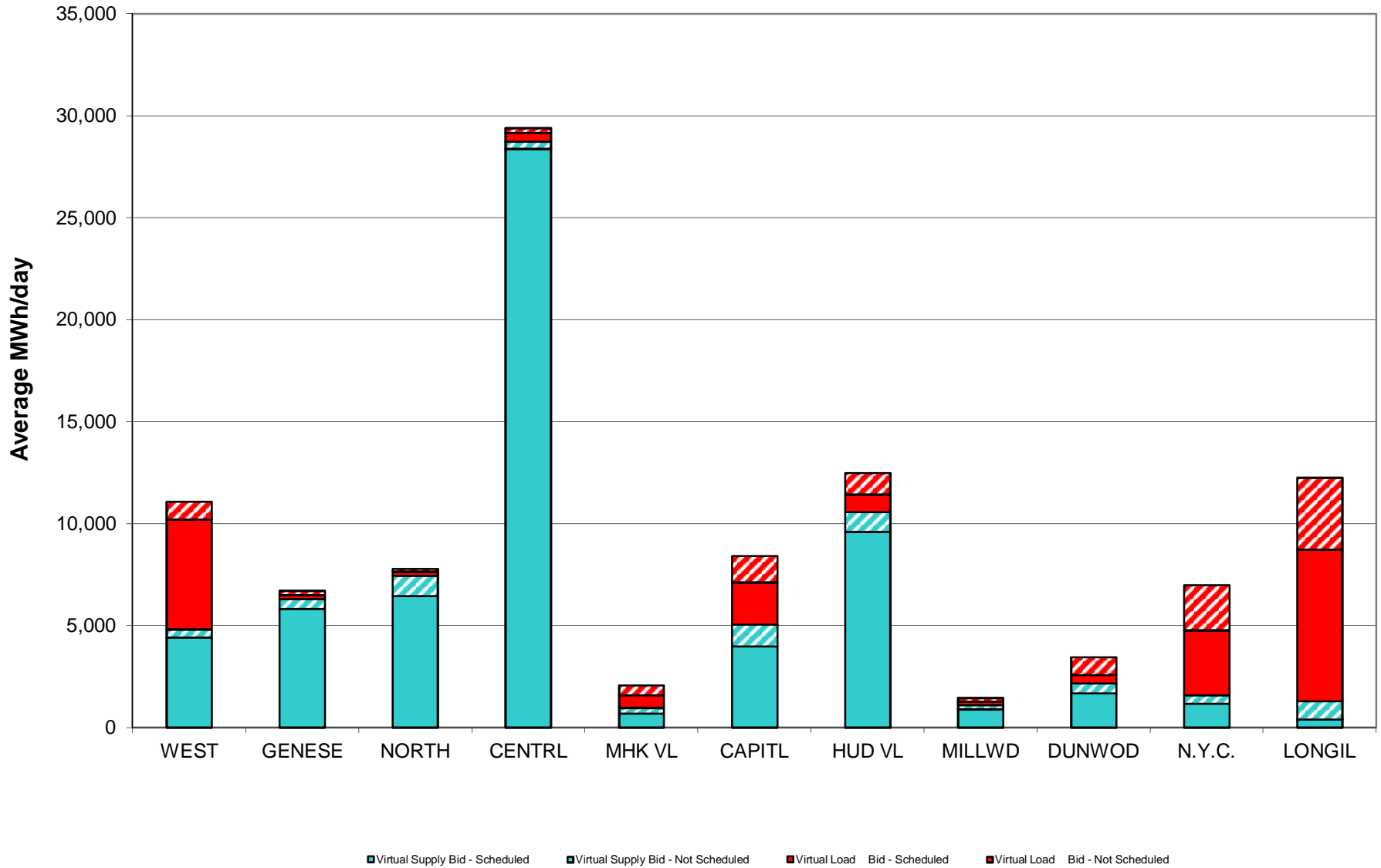


* Calendar days from reservation date.

NYISO Virtual Trading Average MWh per day



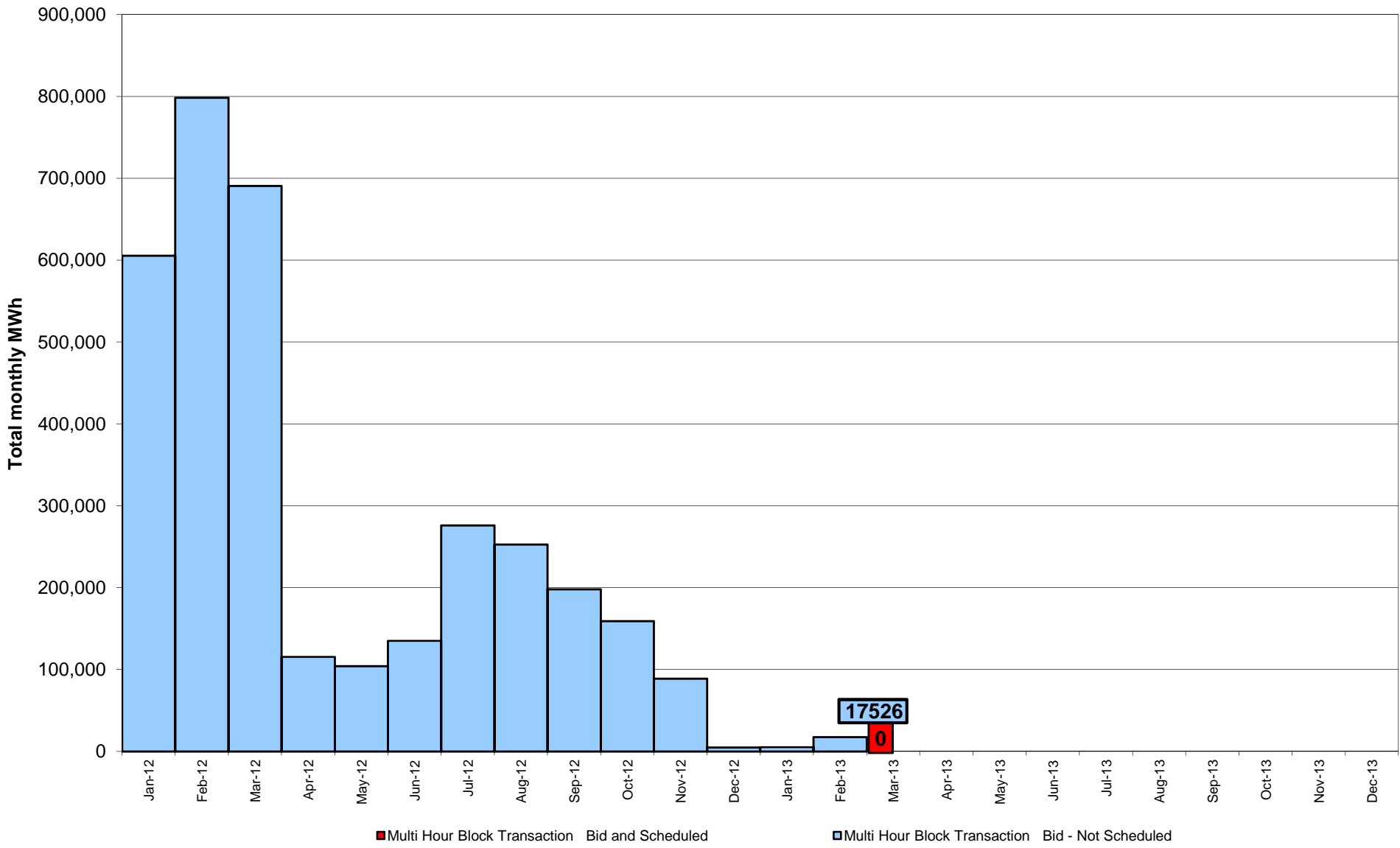
Virtual Load and Supply Zonal Statistics through February 28, 2013



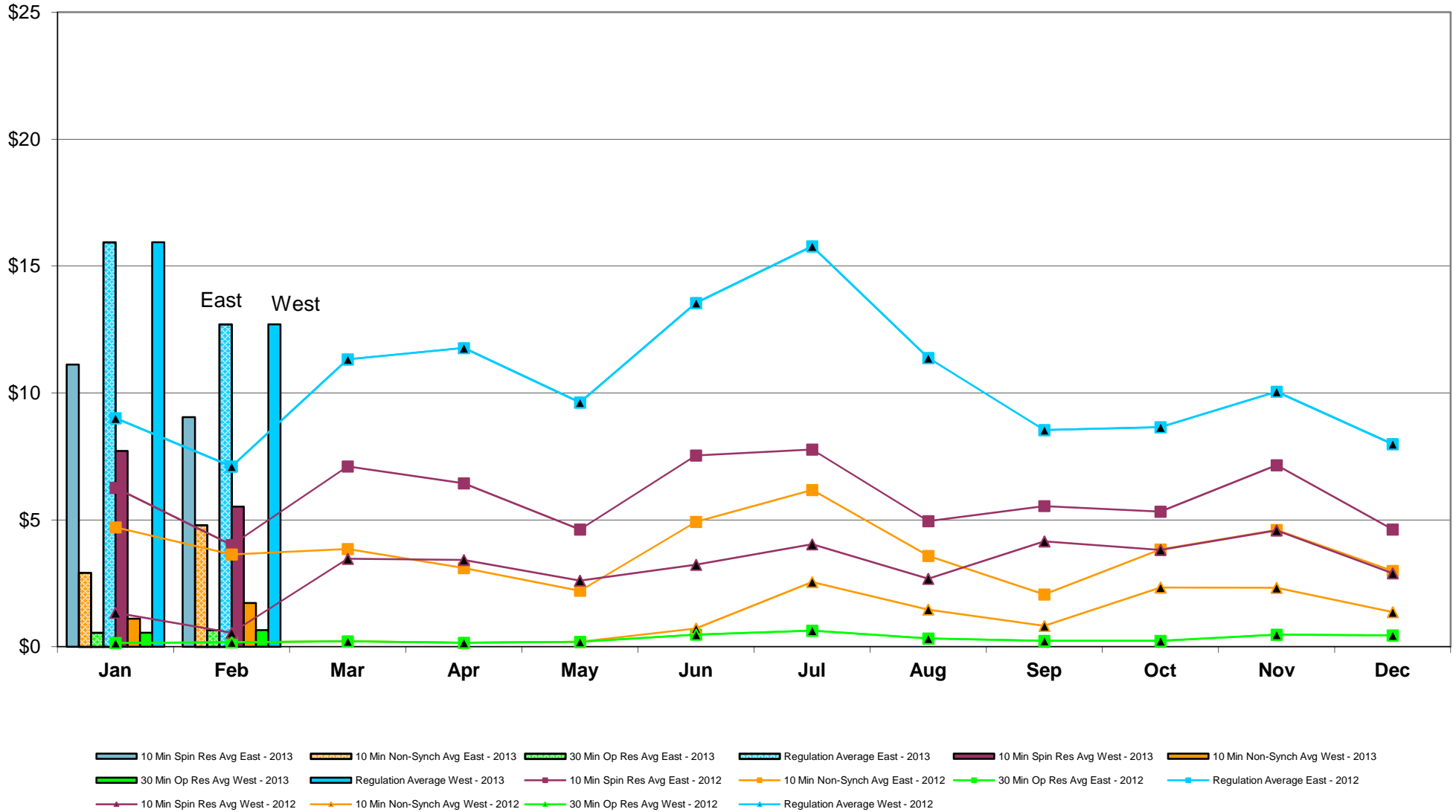
Virtual Load and Supply Zonal Statistics (Average MWh/day) - 2013

		Virtual Load Bid		Virtual Supply Bid				Virtual Load Bid		Virtual Supply Bid				Virtual Load Bid		Virtual Supply Bid			
Zone	Date	Scheduled	Not Scheduled	Scheduled	Not Scheduled	Zone	Date	Scheduled	Not Scheduled	Scheduled	Not Scheduled	Zone	Date	Scheduled	Not Scheduled	Scheduled	Not Scheduled		
WEST	Jan-13	5,393	880	4,402	409	MHK VL	Jan-13	617	477	695	273	DUNWOD	Jan-13	410	859	1,682	491		
	Feb-13	3,366	263	3,940	151		Feb-13	480	324	370	72		Feb-13	448	294	2,570	1,216		
	Mar-13						Mar-13						Mar-13						
	Apr-13						Apr-13						Apr-13						
	May-13						May-13						May-13						
	Jun-13						Jun-13						Jun-13						
	Jul-13						Jul-13						Jul-13						
	Aug-13						Aug-13						Aug-13						
	Sep-13						Sep-13						Sep-13						
	Oct-13						Oct-13						Oct-13						
	Nov-13						Nov-13						Nov-13						
	Dec-13						Dec-13						Dec-13						
GENESE	Jan-13	184	207	5,822	492	CAPITL	Jan-13	2,053	1,313	3,977	1,088	N.Y.C.	Jan-13	3,192	2,206	1,171	414		
	Feb-13	238	60	5,305	266		Feb-13	1,175	1,148	5,323	585		Feb-13	3,964	2,187	689	450		
	Mar-13						Mar-13						Mar-13						
	Apr-13						Apr-13						Apr-13						
	May-13						May-13						May-13						
	Jun-13						Jun-13						Jun-13						
	Jul-13						Jul-13						Jul-13						
	Aug-13						Aug-13						Aug-13						
	Sep-13						Sep-13						Sep-13						
	Oct-13						Oct-13						Oct-13						
	Nov-13						Nov-13						Nov-13						
	Dec-13						Dec-13						Dec-13						
NORTH	Jan-13	206	115	6,458	997	HUD VL	Jan-13	849	1,042	9,608	971	LONGIL	Jan-13	7,420	3,530	419	882		
	Feb-13	376	72	5,234	969		Feb-13	1,353	684	10,729	819		Feb-13	6,410	3,439	442	682		
	Mar-13						Mar-13						Mar-13						
	Apr-13						Apr-13						Apr-13						
	May-13						May-13						May-13						
	Jun-13						Jun-13						Jun-13						
	Jul-13						Jul-13						Jul-13						
	Aug-13						Aug-13						Aug-13						
	Sep-13						Sep-13						Sep-13						
	Oct-13						Oct-13						Oct-13						
	Nov-13						Nov-13						Nov-13						
	Dec-13						Dec-13						Dec-13						
CENTRL	Jan-13	436	244	28,385	349	MILLWD	Jan-13	173	162	894	214	NYISO	Jan-13	20,932	11,035	63,512	6,579		
	Feb-13	794	499	27,674	231		Feb-13	197	250	1,250	184		Feb-13	18,802	9,219	63,526	5,626		
	Mar-13						Mar-13						Mar-13						
	Apr-13						Apr-13						Apr-13						
	May-13						May-13						May-13						
	Jun-13						Jun-13						Jun-13						
	Jul-13						Jul-13						Jul-13						
	Aug-13						Aug-13						Aug-13						
	Sep-13						Sep-13						Sep-13						
	Oct-13						Oct-13						Oct-13						
	Nov-13						Nov-13						Nov-13						
	Dec-13						Dec-13						Dec-13						

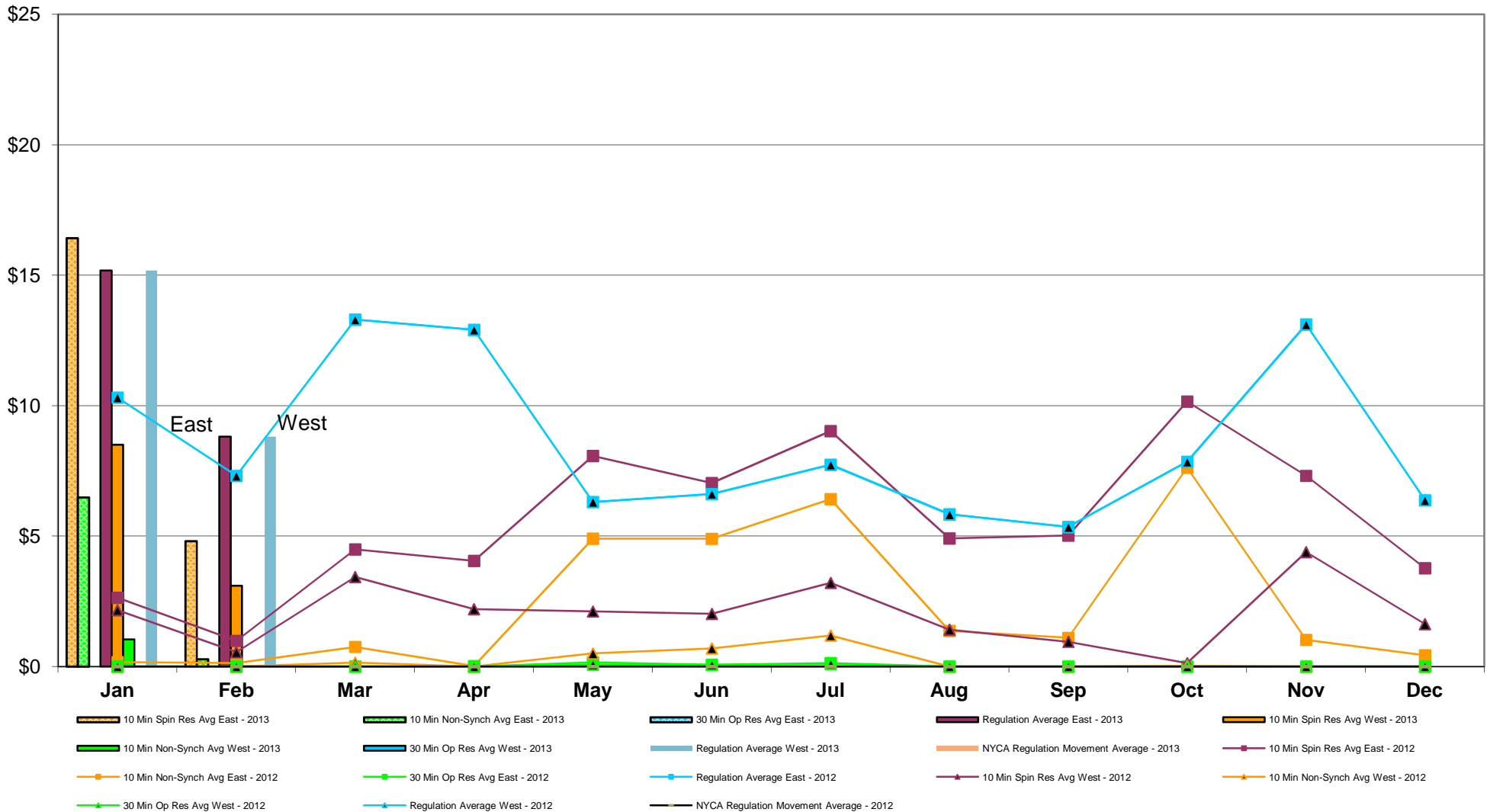
NYISO Multi Hour Block Transactions Monthly Total MWh



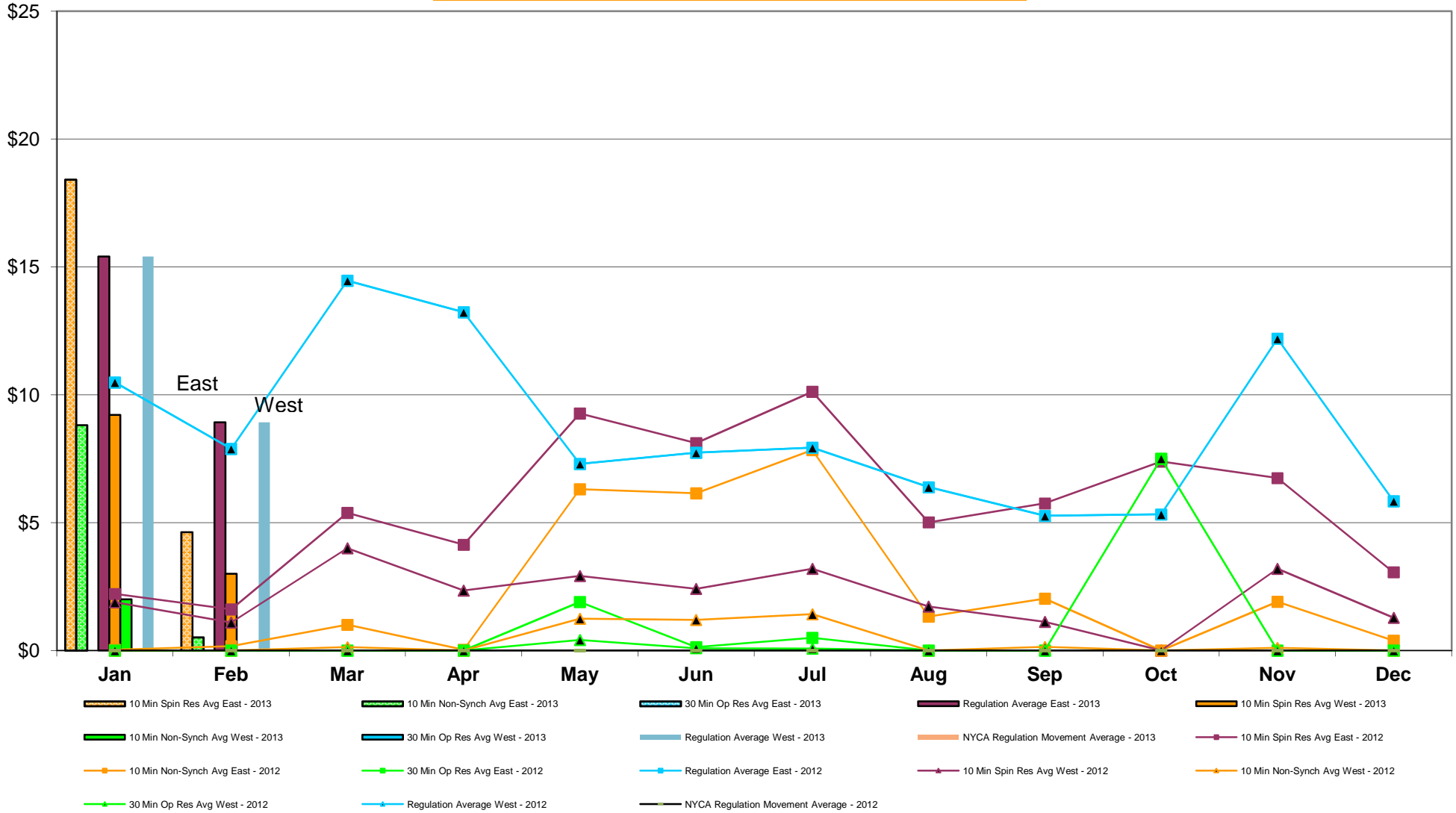
NYISO Monthly Average Ancillary Service Prices Day Ahead Market 2012 - 2013



NYISO Monthly Average Ancillary Service Prices RTC Market 2012 - 2013



NYISO Monthly Average Ancillary Service Prices Real Time Market 2012 - 2013

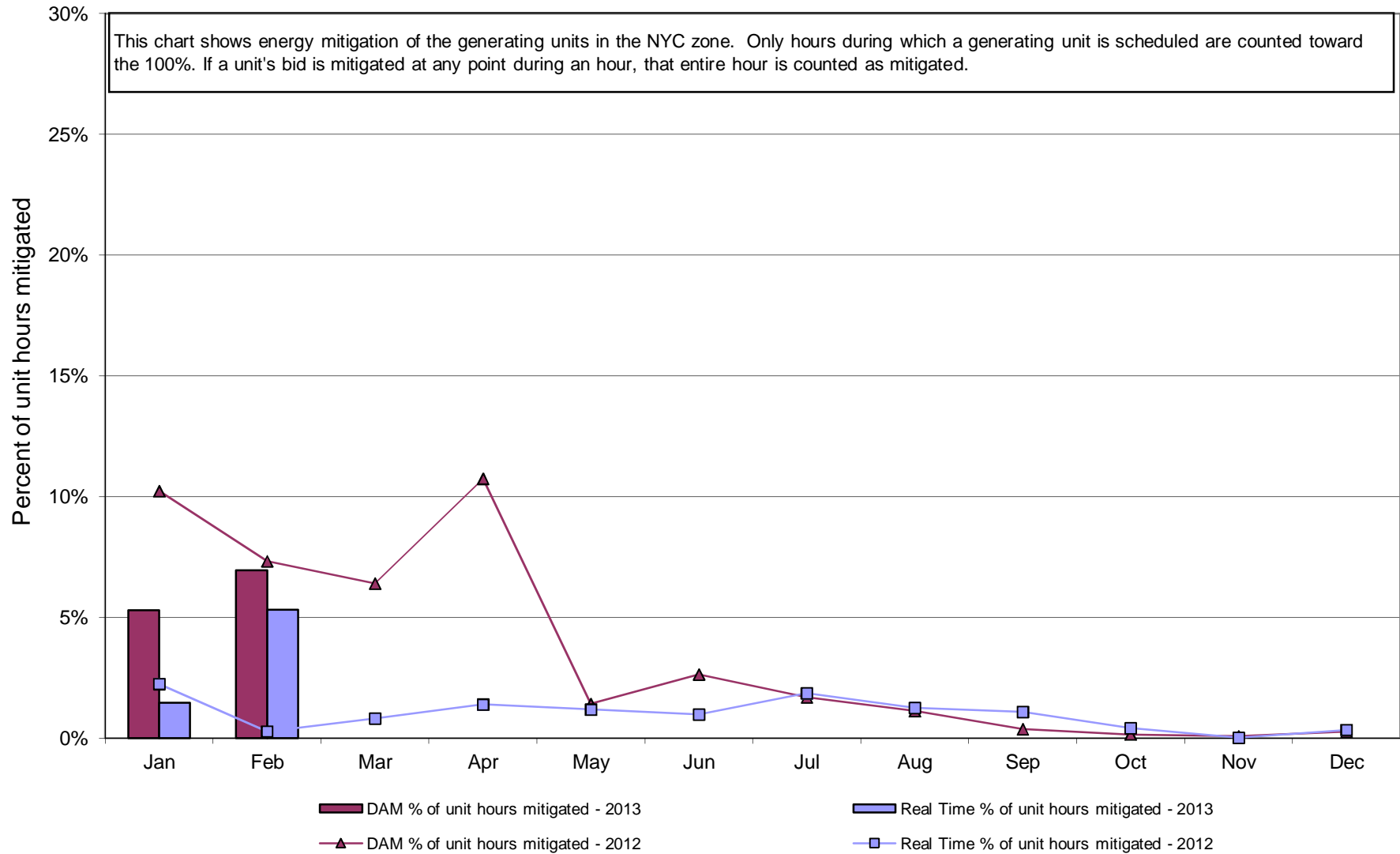


NYISO Markets Ancillary Services Statistics - Unweighted Price (\$/MWH)

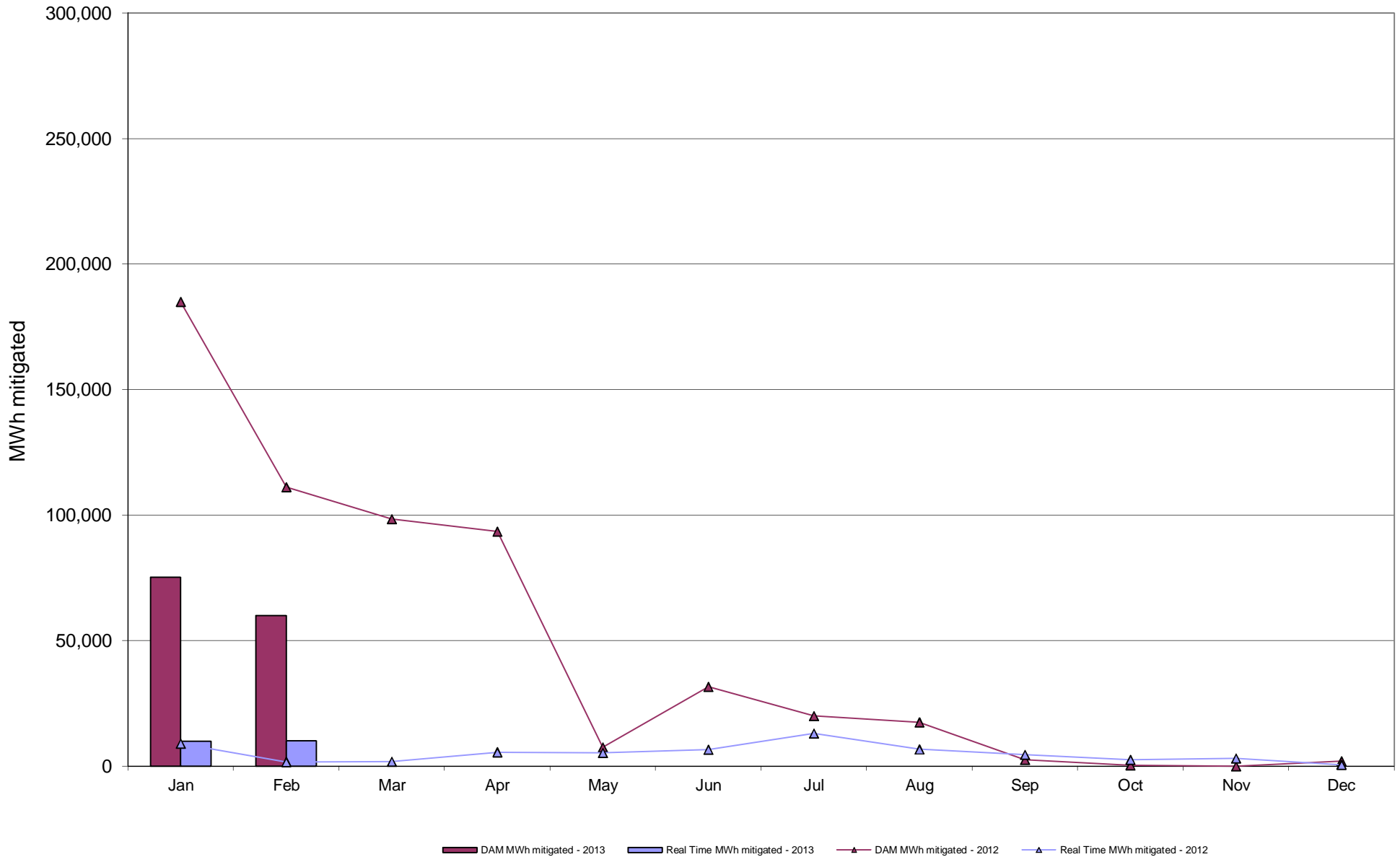
2013	<u>January</u>	<u>February</u>	<u>March</u>	<u>April</u>	<u>May</u>	<u>June</u>	<u>July</u>	<u>August</u>	<u>September</u>	<u>October</u>	<u>November</u>	<u>December</u>
Day Ahead Market												
10 Min Spin East	11.12	9.05										
10 Min Spin West	7.72	5.53										
10 Min Non Synch East	2.91	4.79										
10 Min Non Synch West	1.11	1.73										
30 Min East	0.56	0.65										
30 Min West	0.56	0.65										
Regulation East	15.94	12.70										
Regulation West	15.94	12.70										
RTC Market												
10 Min Spin East	16.42	4.81										
10 Min Spin West	8.50	3.10										
10 Min Non Synch East	6.48	0.28										
10 Min Non Synch West	1.04	0.00										
30 Min East	0.00	0.00										
30 Min West	0.00	0.00										
Regulation East	15.18	8.81										
Regulation West	15.18	8.81										
NYCA Regulation Movement	0.00	0.00										
Real Time Market												
10 Min Spin East	18.42	4.63										
10 Min Spin West	9.22	3.00										
10 Min Non Synch East	8.81	0.52										
10 Min Non Synch West	2.00	0.00										
30 Min East	0.00	0.00										
30 Min West	0.00	0.00										
Regulation East	15.40	8.92										
Regulation West	15.40	8.92										
NYCA Regulation Movement	0.00	0.00										
2012	<u>January</u>	<u>February</u>	<u>March</u>	<u>April</u>	<u>May</u>	<u>June</u>	<u>July</u>	<u>August</u>	<u>September</u>	<u>October</u>	<u>November</u>	<u>December</u>
Day Ahead Market												
10 Min Spin East	6.26	4.01	7.11	6.44	4.62	7.54	7.77	4.95	5.55	5.32	7.15	4.62
10 Min Spin West	1.34	0.56	3.46	3.43	2.61	3.23	4.04	2.68	4.16	3.82	4.58	2.90
10 Min Non Synch East	4.71	3.64	3.85	3.11	2.21	4.92	6.18	3.58	2.07	3.84	4.60	2.99
10 Min Non Synch West	0.15	0.18	0.22	0.16	0.20	0.72	2.55	1.47	0.82	2.34	2.32	1.37
30 Min East	0.15	0.18	0.22	0.16	0.20	0.48	0.64	0.33	0.23	0.23	0.48	0.45
30 Min West	0.15	0.18	0.22	0.16	0.20	0.48	0.64	0.33	0.23	0.23	0.48	0.45
Regulation East	9.01	7.11	11.33	11.77	9.63	13.55	15.78	11.38	8.54	8.65	10.05	7.99
Regulation West	9.01	7.11	11.33	11.77	9.63	13.55	15.78	11.38	8.54	8.65	10.05	7.99
RTC Market												
10 Min Spin East	2.64	0.99	4.49	4.05	8.07	7.03	9.02	4.91	5.02	10.16	7.31	3.77
10 Min Spin West	2.16	0.55	3.43	2.20	2.11	2.02	3.21	1.41	0.95	0.13	4.39	1.63
10 Min Non Synch East	0.17	0.13	0.75	0.02	4.90	4.90	6.42	1.36	1.10	7.62	1.02	0.43
10 Min Non Synch West	0.00	0.00	0.15	0.00	0.50	0.69	1.19	0.00	0.00	0.03	0.00	0.00
30 Min East	0.00	0.00	0.00	0.00	0.16	0.07	0.13	0.00	0.00	0.00	0.00	0.00
30 Min West	0.00	0.00	0.00	0.00	0.07	0.07	0.10	0.00	0.00	0.00	0.00	0.00
Regulation East	10.31	7.31	13.30	12.91	6.31	6.61	7.74	5.83	5.35	7.85	13.11	6.38
Regulation West	10.31	7.31	13.30	12.91	6.31	6.61	7.74	5.83	5.35	7.85	13.11	6.38
NYCA Regulation Movement	0.00	0.00	0.00	0.00	0.00	0.00	0.00	0.00	0.00	0.00	0.00	0.00
Real Time Market												
10 Min Spin East	2.21	1.61	5.38	4.14	9.27	8.11	10.12	5.01	5.75	9.93	6.74	3.06
10 Min Spin West	1.89	1.09	4.00	2.34	2.92	2.41	3.20	1.72	1.13	0.28	3.19	1.28
10 Min Non Synch East	0.03	0.17	1.01	0.03	6.31	6.15	7.84	1.33	2.03	7.39	1.91	0.39
10 Min Non Synch West	0.00	0.00	0.13	0.00	1.24	1.20	1.42	0.00	0.14	0.00	0.10	0.00
30 Min East	0.00	0.00	0.00	0.00	1.90	0.13	0.49	0.00	0.00	0.00	0.00	0.00
30 Min West	0.00	0.00	0.00	0.00	0.41	0.09	0.08	0.00	0.00	0.00	0.00	0.00
Regulation East	10.49	7.89	14.46	13.23	7.30	7.74	7.93	6.39	5.27	7.50	12.20	5.84
Regulation West	10.49	7.89	14.46	13.23	7.30	7.74	7.93	6.39	5.27	7.50	12.20	5.84
NYCA Regulation Movement	0.00	0.00	0.00	0.00	0.00	0.00	0.00	0.00	0.00	0.00	0.00	0.00

NYISO In City Energy Mitigation - AMP (NYC Zone) 2012 - 2013

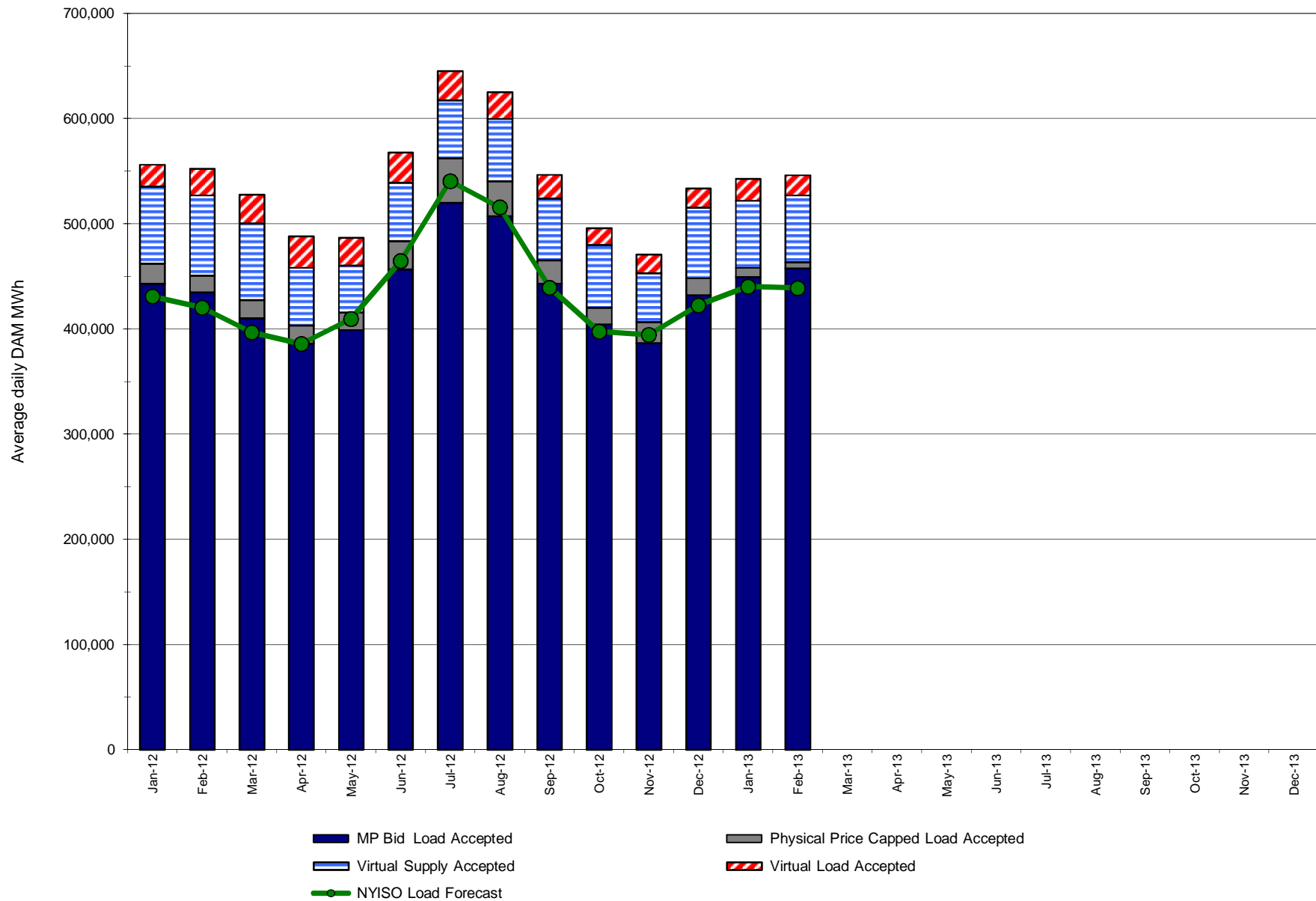
Percentage of committed unit-hours mitigated



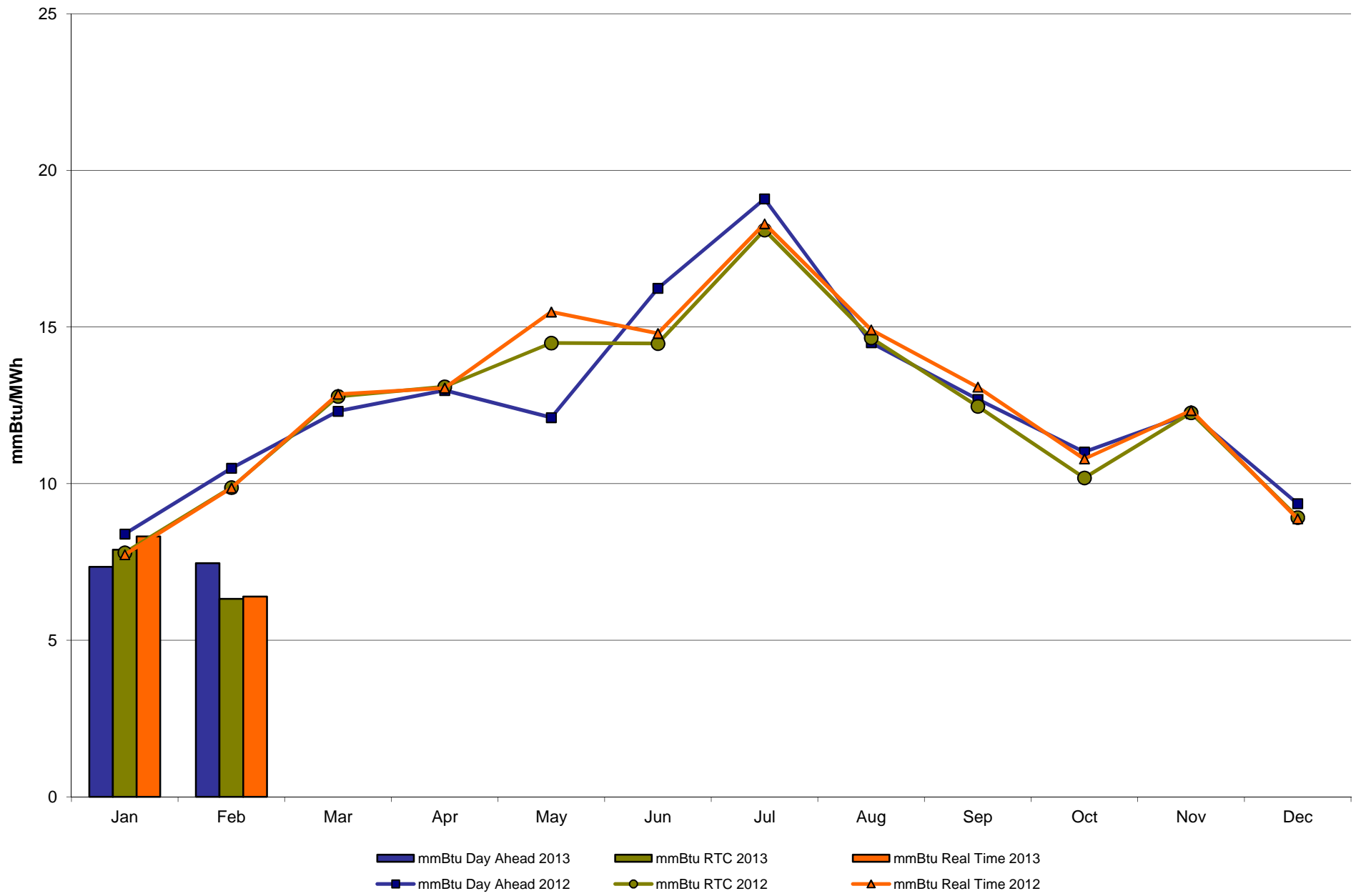
**NYISO In City Energy Mitigation (NYC Zone) 2012 - 2013
Monthly megawatt hours mitigated**



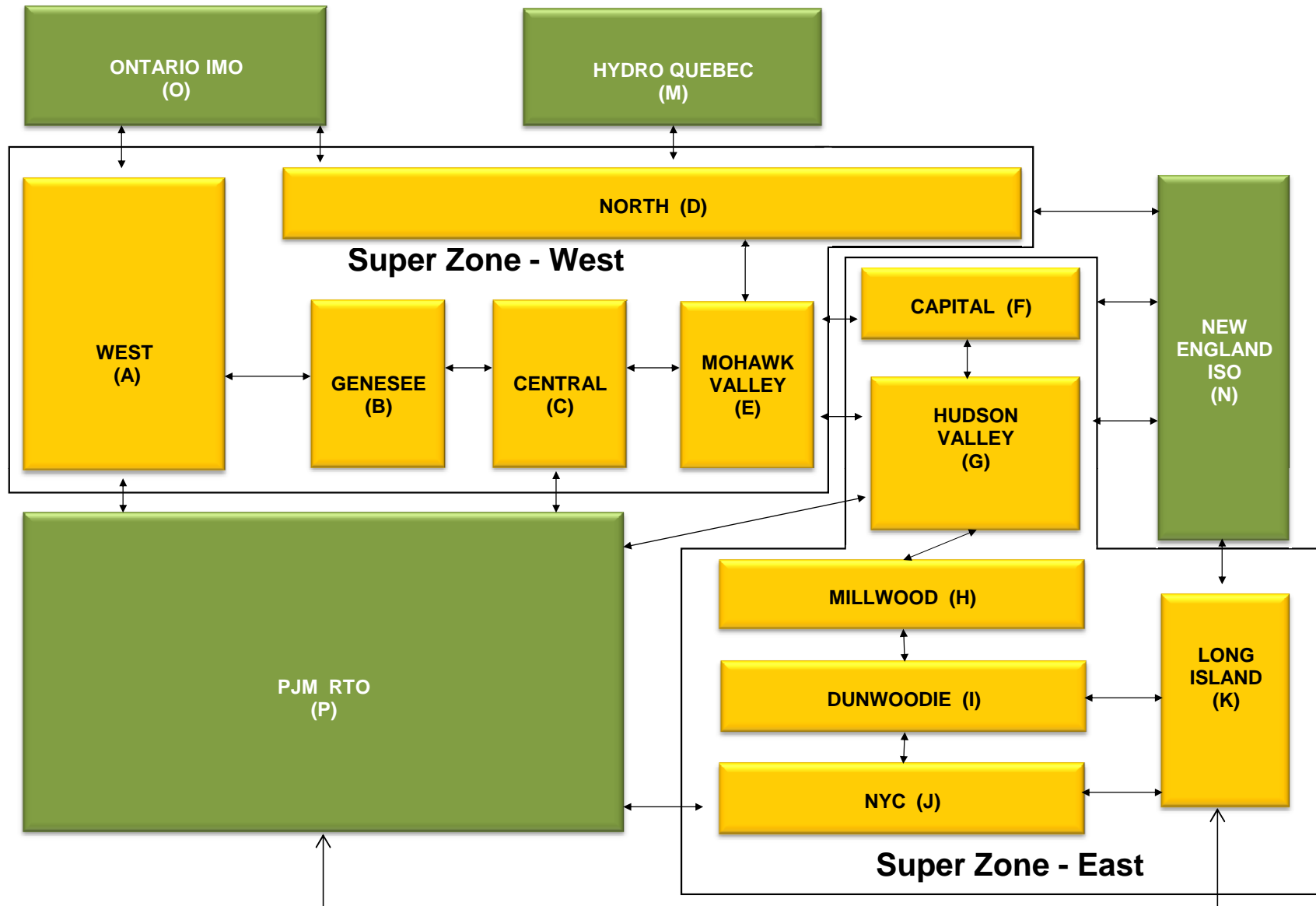
NYISO Average Daily DAM Load Bid Summary



Monthly Implied Heat Rate 2012-2013



NYISO LBMP ZONES



Billing Codes for Chart 4-C

Chart - C Category Name	Billing Code	Billing Category Name
Bid Production Cost Guarantee Balancing	81203	Balancing NYISO Bid Production Cost Guarantee - Internal Units
Bid Production Cost Guarantee Balancing	81204	Balancing NYISO Bid Production Cost Guarantee - External Units
Bid Production Cost Guarantee Balancing	81205	Balancing NYISO Bid Production Cost Guarantee Expenditure due to Curtailed Imports
Bid Production Cost Guarantee Balancing	81208	Balancing NYISO Bid Production Cost Guarantee - Internal Units
Bid Production Cost Guarantee Balancing	81209	Balancing NYISO Bid Production Cost Guarantee - External Units
Bid Production Cost Guarantee Balancing	81213	Balancing NYISO Bid Production Cost Guarantee Expenditure due to Curtailed Imports
Bid Production Cost Guarantee DAM	81201	DAM NYISO Bid Production Cost Guarantee - Internal Units
Bid Production Cost Guarantee DAM	84001	EDRP/SCR Demand Response - Local
Bid Production Cost Guarantee DAM	84101	EDRP/SCR Demand Response - NYISO Wide
Bid Production Cost Guarantee DAM	81401	DAM Price Responsive Load Program
Bid Production Cost Guarantee DAM	81202	DAM NYISO Bid Production Cost Guarantee - External Units
Bid Production Cost Guarantee DAM	81206	DAM NYISO Bid Production Cost Guarantee - Internal Units
Bid Production Cost Guarantee DAM	81207	DAM NYISO Bid Production Cost Guarantee - External Units
Bid Production Cost Guarantee DAM Virtual	81501	DAM Virtual Bid Production Cost Guarantee
DAM Contract Balancing	81315	DAM Contract Balancing
DAM Contract Balancing	81317	DAM Contract Balancing
Local Reliability Balancing	81002	Balancing Local Reliability Bid Production Cost Guarantee
Local Reliability Balancing	83901	Margin Restoration (MOB) Revenue
Local Reliability DAM	81001	DAM Local Reliability Bid Production Cost Guarantee
NYISO Cost of Operations	80901	NYISO Cost Of Operations
NYISO Cost of Operations	80902	NYISO Cost Of Operations
NYISO Cost of Operations	83501	NYISO Cost Of Operations
NYISO Cost of Operations	83502	NYISO Cost Of Operations
Residuals Balancing	81302	Balancing Market Energy Residual
Residuals Balancing	81304	Balancing Market Loss Residual
Residuals Balancing	81305	Balancing Market Congestion Balancing
Residuals Balancing	81306	Emergency Energy Purchases
Residuals Balancing	81307	Emergency Energy Sales
Residuals Balancing	81309	Balancing Market Energy Residual
Residuals Balancing	81311	Balancing Market Loss Residual
Residuals Balancing	81312	Balancing Market Congestion Balancing
Residuals Balancing	81313	Emergency Energy Purchases
Residuals Balancing	81314	Emergency Energy Sales
Residuals DAM	81301	Day Ahead Market Energy Residual
Residuals DAM	81303	Day Ahead Market Loss Residual
Residuals DAM	81308	Day Ahead Market Energy Residual
Residuals DAM	81310	Day Ahead Market Loss Residual

Summary Description of Upcoming Regulatory Compliance Filings, FERC Rulemakings, and Recent Submitted Filings and Issued Orders on NYISO Matters

Upcoming Compliance Filings

Filing Due Date	Upcoming Compliance Filings (Description)	Docket Number	Comments
03/29/2013	NYISO (every 3 years) compliance filing re: new capacity zone MST section 5.16	ER12-360-000, ER04-449-000	
04/01/2013	NYISO semiannual compliance re: efforts to develop rules addressing compensation to generators determined to be needed for reliability	ER10-2220-000	

Recently Received Orders

Filing Date	Filing Summary (Order issued)	Docket Number	Order Date	Order Summary
01/22/2013	NYISO/NYSEG joint filing of amended SGIA No. 1677 among NYISO, NYSEG and AES ES Westover, LLC	ER13-789-000	03/05/2013	FERC letter order accepting SGIA effective 12/26/12, as requested
01/24/2013	NYISO 205 tariff filing re: revisions to implement the Hudson Transmission Partners scheduled line	ER13-792-000	03/01/2013	FERC letter order accepting implementation of HTP scheduled line effective 4/15/13, as requested
01/30/2013	NYISO compliance filing to include the definition of "Blind Trust" in the OATT	ER13-435-001	03/05/2013	FERC letter order accepting compliance filing effective 1/1/13, as requested
01/30/2013	NYISO compliance filing to include a reference to the definition of "Blind Trust" in the ISO Agreement	ER13-437-001	03/05/2013	FERC letter order accepting compliance filing effective 1/1/13, as requested
02/15/2013	NYISO 205 tariff filing re: OATT Attachments S, X and Z concerning interconnection procedures	ER13-588-000	02/15/2013	FERC order accepting revisions subject to a compliance filing within 15 days (i.e., 3/4/13)

Recently Submitted Filings

Filing Date	Filing Summary	Docket Number
01/22/2013	NYISO compliance filing re: regulation movement response rate under Order No. 755	ER12-1653-002

01/22/2013	NYISO filing of amended restated SGIA No. 1677 among the NYISO, NYSEG, and AES ES Westover	ER13-789-000
01/22/2013	NYISO filing of limited comments in response to comments and protests filed in Cayuga's cost-of-service agreement proceeding	ER13-405-000
01/23/2013	NYISO joint filing with the parties requesting extension of comment period deadline to continue negotiated resolution of the Marble River complaint	EL13-20-000
01/24/2013	NYISO tariff and NYISO/PJM Joint Operating Agreement revisions to implement the Hudson Transmission Partners Scheduled Line	ER13-792-000
01/24/2013	NYISO answer to the Cape Vincent Wind Power protest filed in response to the NYISO filing re: interconnection procedures tariff revisions	ER13-588-000
01/25/2013	NYISO filing and refiling of errata re: correction of eTariff effective date in 01/18/13 interface pricing filing	ER13-780-001 and -002
01/30/2013	NYISO compliance filing re: incorporation of the definition of the term "blind trust" into the OATT and ISO Agreement	ER13-435-001, ER13-437-001
01/31/2013	NYISO filing of its 4 th quarter 2012 EQR report (no order to be issued)	ER02-2001-000
02/01/2013	NYISO compliance filing re: inclusion of Technical Bulletin 217 material within the tariffs	ER13-869-000
02/06/2013	NYISO filing re: brief opposing the exceptions filed by Joint Applicants in the ITC PARS cost allocation proceeding	ER11-1844-003
02/08/2013	NYISO tariff filing to modify the LBMP calculation to better reflect resource costs during scarcity conditions	ER13-909-000
02/14/2013	NYISO compliance filing of its annual ICAP informational report – contains privileged sections	ER01-3001-000, ER03-647-000
02/22/2013	NYISO filing of an errata to its annual demand side management program report	ER01-3001-000
02/25/2013	NYISO filing of a response to the PJM Market Monitor comments re: NYISO's interface pricing filing	ER13-780-001
02/27/2013	NYISO filing of a response to Beacon Power and NYTO comments re: NYISO's compliance filing on mitigation measures specific to regulation movement	ER12-1653-002, RM11-7-000, and AD10-11-000
03/04/2013	NYISO compliance filing re: OATT Attachments S, X and Z interconnection procedures	ER13-588-001
03/07/2013	Joint ISO/RTO filing of a motion to intervene and comment re: NERC petition for approval of reliability standard EOP-004-2 Event Reporting	RD13-3-000
03/08/2013	NYISO errata filing re: compliance OATT Attachments S, X and Z interconnection procedures	ER13-588-002
03/08/2013	NYISO answer to Energy Spectrum and Riverbay comments re: NYISO compliance filing concerning inclusion of Technical Bulletin 217 material in the tariff	ER13-869-000
03/08/2013	NYISO informational filing and request to defer action re: TC Ravenswood's black start service rate schedule	ER12-1418-000
03/14/2013	NYISO filing with the NYSDPS re: retirement of Montauk facility (contains confidential material)	Matter 10-02007
03/15/2013	NYISO motion requesting tariff waiver and extension of time re: new capacity zone	ER12-360-000

The New York Independent System Operator (NYISO) is a not-for-profit corporation responsible for operating the state's bulk electricity grid, administering New York's competitive wholesale electricity markets, conducting comprehensive long-term planning for the state's electric power system, and advancing the technological infrastructure of the electric system serving the Empire State.



www.nyiso.com